



User Manual

AEP Utility 3

January 2022 v.1.9.0
©2022 SATO Corporation

Contents

Introduction	5
Supported Printer Models	6
Install the Software	7
Connect to Printer	8
Connect to the Printer via LAN and WLAN	8
Connect to the Printer via USB	9
Uninstall the Software	10
Navigate AEP Utility 3	11
Start Screen	12
Start Toolbar	12
Settings Dialog	13
Package Overview	14
Package Toolbar	14
Progress Bar	15
Editors	16
Table Editor	16
Package	18
Open Package	19
Manage Recent Packages	20
Manage Assets	20
Tables	21
Manage Table Editor	21
Manage Tables	22
Label Images	23
Manage Label Images	24
Screen Images	24
Manage Screen Images	25
Videos	25
Manage Videos	26
Package Settings	26
Locking Assets	27
Locking Assets Overview	27
Create Lock Profiles	27
Apply Locks and Permissions	28
Manage Lock Profiles	30
SATO App Storage	31
Logging in to SATO App Storage	32
Identifying a SATO App Storage-connected Package	33
Manage Packages with SATO App Storage	34
Download Package	34
Delete Files from SATO App Storage	36
Upload Package to SATO App Storage	37
Distribute to Groups	38
Acquisition of the Set Value for Distribution Group and Distribution Type	39
Configure SATO App Storage in Package	41
License Agreements	44

Software License Agreement

PLEASE READ THE FOLLOWING TERMS AND CONDITIONS BEFORE USING THIS PRODUCT. BY INSTALLING THE PRODUCT YOU THEREBY INDICATE YOUR ACCEPTANCE OF THESE TERMS AND CONDITIONS. SHOULD YOU DISAGREE WITH ANY OF THE TERMS OR CONDITIONS LISTED BELOW, PROMPTLY REMOVE ALL FILES RELATED TO THIS PRODUCT FROM YOUR HOST PLATFORM AND RETURN THE PRODUCT TO SATO CORPORATION.

1. You explicitly agree to accept a non-exclusive license to use the Software identified on the distribution media solely for your own customary business or personal purposes. Your local and national laws govern this Agreement.
2. Henceforth, "Software" shall refer to the digitally encoded, machine-readable data and program. The term "Software Product" includes the Software identified on the distribution media, including any accompanying documentation. The term "Distribution Media" refers to any method by which the Software Product is delivered to the user, including but not limited to Floppy Disks, CD-ROM, Magnetic Tape and On-Line distribution via the Internet. The Software Product is licensed (not sold) to you, and SATO® either owns or licenses from other vendors who own all copyright, trade secret, patent and other proprietary rights in the Software Product.
3. To protect the proprietary rights of SATO Corporation, you agree to maintain the Software Product and other proprietary information concerning the Software Product in strict confidence and to establish reasonable procedures regulating access to and use of the software.
4. You agree not to duplicate or copy the Software except that you may make one backup copy. You agree that any such copy shall contain the same proprietary notices as those appearing on the original.
5. You shall not sublicense, sell, lease, or otherwise transfer all or any portion of the Software Product separate from the printer(s), without the prior written consent of SATO Corporation.
6. You may not modify or prepare derivative works of the Software Product. You may not transmit the Software Product over a network, by telephone, or electronically using any means; or reverse engineer, decompile or disassemble the Software.
7. You may transfer the Software Product with the printer(s), but only if the recipient agrees to accept the terms and conditions of this Agreement. Your license is automatically terminated if you transfer the Software Product and printer(s).
8. This License remains in force until terminated, and may be terminated by agreement between you and SATO Corporation, or by SATO Corporation, if you fail to comply with the terms of this License if such failure is not corrected within thirty (30) days after notice. When this License is terminated, you shall either return to the place you obtained them from, or destroy, the printer and all copies of the Software and documentation.

9. SATO Corporation warrants that for ninety (90) days after delivery, the Software will perform in accordance with specifications published by SATO Corporation, and that the distribution media will be free from defects in material and workmanship. SATO Corporation does not warrant that the Software is free from all bugs, errors and omissions.
10. Your exclusive remedy and the sole liability of SATO Corporation in connection with the Software is replacement of defective distribution media upon their return to SATO Corporation.

SATO Corporation will not be liable for any loss or damage caused by delays in furnishing a Software Product or any other performance under this Agreement. SATO Corporation does not warrant that the functions contained in the Software will meet your requirements or that the operation of the Software will be uninterrupted or error-free.

11. Use, duplication or disclosure by the Government is subject to restrictions as set forth in the relevant guidelines of your country, such as the Rights in Technical Data and Computer Software clause at FAR 242.227-7013, subdivision (b) (3) (ii) or subparagraph (c) (1) (ii), as appropriate. Further use, duplication or disclosure is subject to restrictions applicable to restricted rights software as set forth in FAR 52.227-19 (c) (2) or equivalent rules.

THE PARTIES AGREE THAT ALL OTHER WARRANTIES, EXPRESS OR IMPLIED, INCLUDING WARRANTIES OF FITNESS FOR A PARTICULAR PURPOSE AND MERCHANTABILITY ARE EXCLUDED.

SATO Corporation reserves the right to make changes and/or improvements in the Software without notice at any time.

IN NO EVENT WILL SATO CORPORATION BE LIABLE FOR LOST PROFITS, LOST DATA, BUSINESS INTERRUPTIONS OR ANY OTHER DIRECT, INDIRECT, INCIDENTAL OR CONSEQUENTIAL DAMAGES ARISING OUT OF THE USE OF OR INABILITY TO USE THIS PRODUCT, EVEN IF SATO CORPORATION HAS BEEN ADVISED OF THE POSSIBILITY OF SUCH DAMAGES, OR ANY DAMAGES CAUSED BY ABUSE OR MANIPULATION OF THE SOFTWARE. SOME STATES DO NOT ALLOW THE EXCLUSION OR LIMITATION OF LIABILITY FOR CONSEQUENTIAL OR INCIDENTAL DAMAGES, SO THE ABOVE LIMITATION MAY NOT APPLY TO YOU.

YOU ACKNOWLEDGE THAT YOU HAVE READ THIS AGREEMENT, UNDERSTAND IT, AND AGREE TO BE BOUND BY ITS TERMS AND CONDITIONS. NEITHER PARTY SHALL BE BOUND BY ANY STATEMENT OR REPRESENTATION NOT CONTAINED IN THIS AGREEMENT. NO CHANGE IN THIS AGREEMENT IS EFFECTIVE UNLESS WRITTEN AND SIGNED BY PROPERLY AUTHORIZED REPRESENTATIVES OF EACH PARTY. BY INSTALLING THIS SOFTWARE PRODUCT, YOU AGREE TO ACCEPT THE TERMS AND CONDITIONS OF THIS AGREEMENT.

Copyrights

Any unauthorized reproduction of the contents of this document, in part or whole, is strictly prohibited.
© 2022 SATO Corporation. All rights reserved.

Limitation of Liability

SATO Corporation and its subsidiaries in Japan, the U.S. and other countries make no representations or warranties of any kind regarding this material, including, but not limited to, implied warranties of merchantability and fitness for a particular purpose. SATO Corporation shall not be held responsible for errors contained herein or any omissions from this material or for any damages, whether direct, indirect, incidental or consequential, in connection with the furnishing, distribution, performance or use of this material. Specifications and contents in this document are subject to change without notice.

Trademarks

SATO is a registered trademark of SATO Holdings Corporation and its subsidiaries in Japan, the U.S. and other countries. All other trademarks are the property of their respective owners.

Software Updating Disclaimer

While all efforts have been taken to ensure accuracy and currency of the information contained herein, there are instances where the contents of this document may be outdated. In that case, proceed to your local SATO regional website (<https://www.sato-global.com/drivers/redirect.html>) to check whether an updated document has been made available for your reference.

1

Introduction



AEP Utility 3 is a professional package management tool for managing the assets in a package. Opening packages in AEP Utility allows you to see an overview of the assets. AEP Utility also lets you modify the product table, and add or replace images and videos used in the package before sending the package to your printer.

- Supported Printer Models
- Install the Software
- Connect to Printer
- Uninstall the Software

Supported Printer Models

Below are the current printers that are supported by AEP Utility 3.

FX3-LX
CT4-LX
HC4-LX
CLNX Series
PW2NX

Install the Software

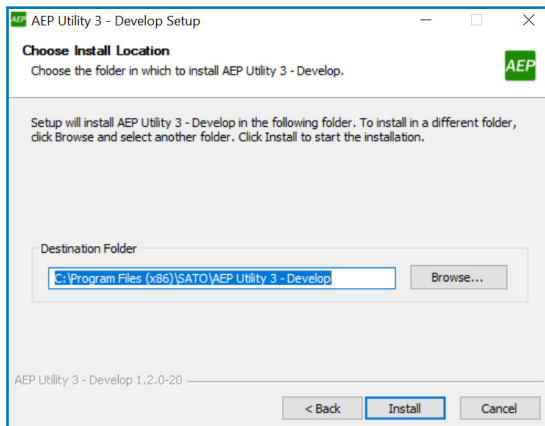
DO NOT CONNECT THE PRINTER before the software has been successfully installed!
System Requirements: Windows 7 or later.

NOTE: You need administrator privileges to run the installer.

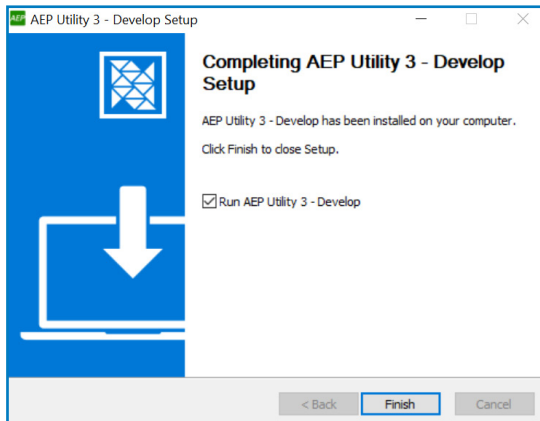
1. Execute **AEP Utility 3 Setup.exe** to launch the installer.
2. Read the license agreement. To accept, click **I Agree**.



3. Select install location, click **Install**.



4. To complete the installation, click **Finish**.



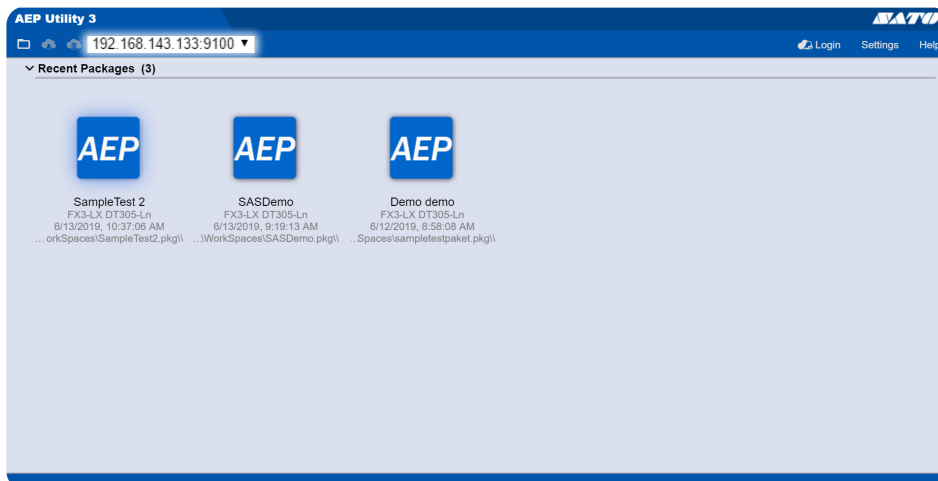
Connect to Printer

Choose one of the following interfaces for connecting the printer to your computer:

- [LAN and WLAN](#)
- [USB](#)

Connect to the Printer via LAN and WLAN

1. Start **AEP Utility 3** by clicking the desktop icon.
2. In the toolbar located at the top of the screen, in the **Select Printer** drop-down list, click **Handle Printers**.



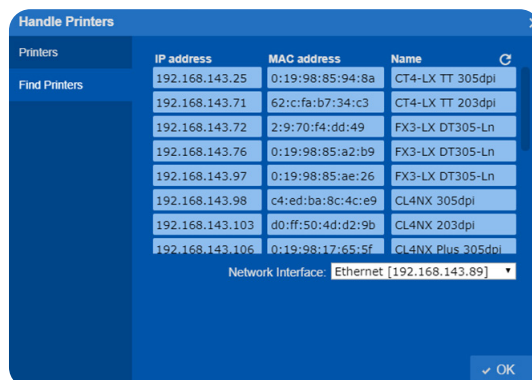
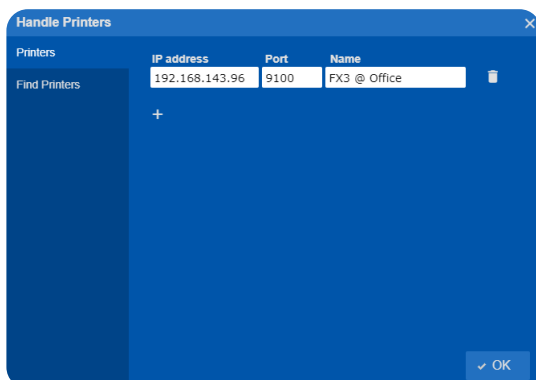
3. Add printer manually

Select **Printers** tab, click the plus icon and enter the **IP address** and **port** of the targeted printer.
NOTE: If you do not know the IP-Address and port of your printer, check your printer’s manual.

Find network-connected printer

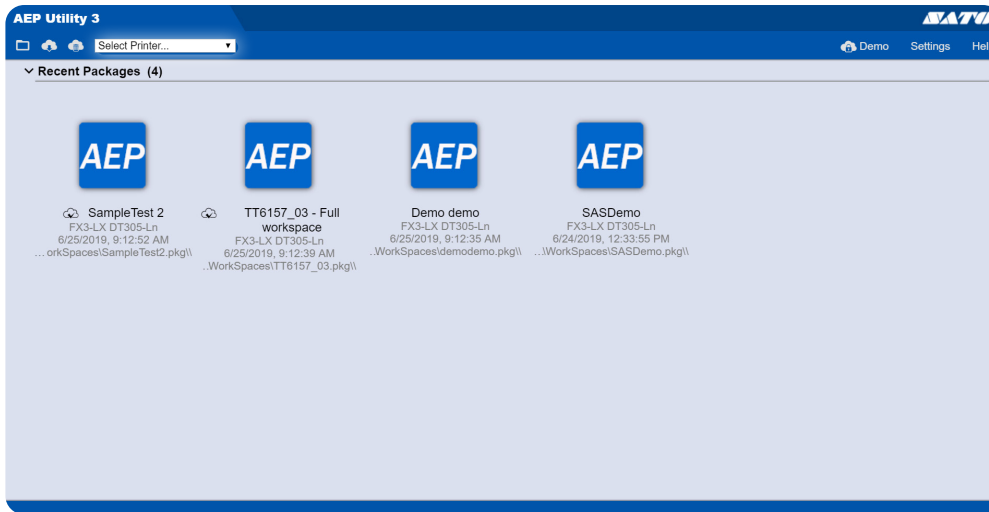
Select **Find Printers** tab. After searching the network a list of found printers will be presented. Click an individual printer to add it to your list.

NOTE: Automatically added printers will also be linked using their MAC address. After searching for printers again, printers that have a different IP address will be updated automatically using the MAC address link (indicated by a link icon next to the printer in the list).



Connect to the Printer via USB

1. Start **AEP Utility 3** by clicking the desktop icon.
2. In the toolbar located at the top of the screen, in the **Select Printer** drop-down list, select the USB-connected printer model.

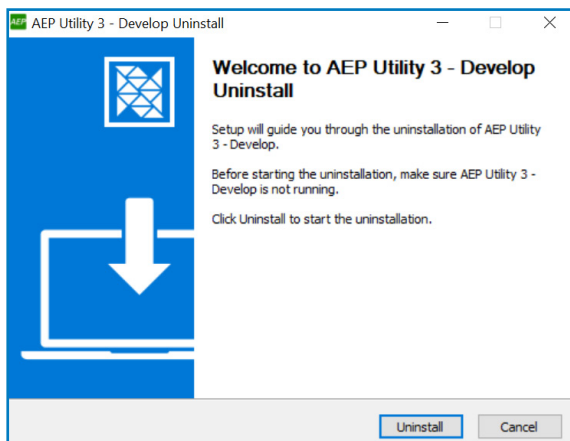


Uninstall the Software

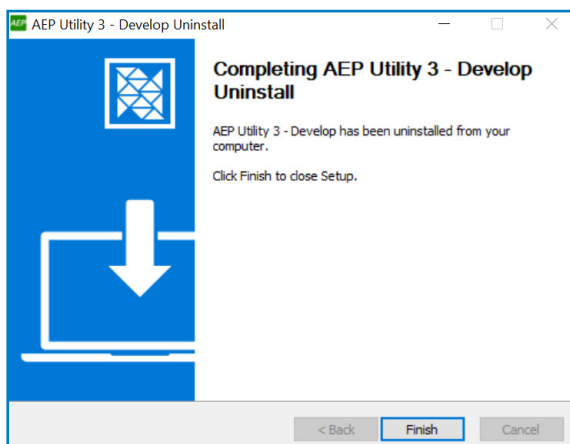
To uninstall AEP Utility 3, use the uninstall program provided by your operating system. Follow the instructions below to complete the uninstallation:

NOTE: You need administrator privileges to run AEP Utility 3 uninstall.

1. Make sure AEP Utility 3 is not running. To start the uninstallation, click **Uninstall**.

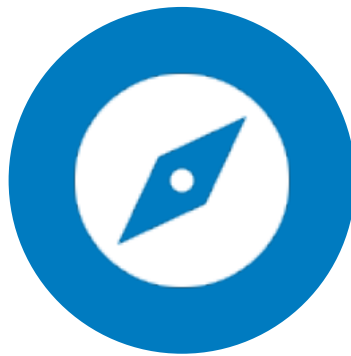


2. To complete the uninstallation, click **Finish**.



2

Navigate AEP Utility 3

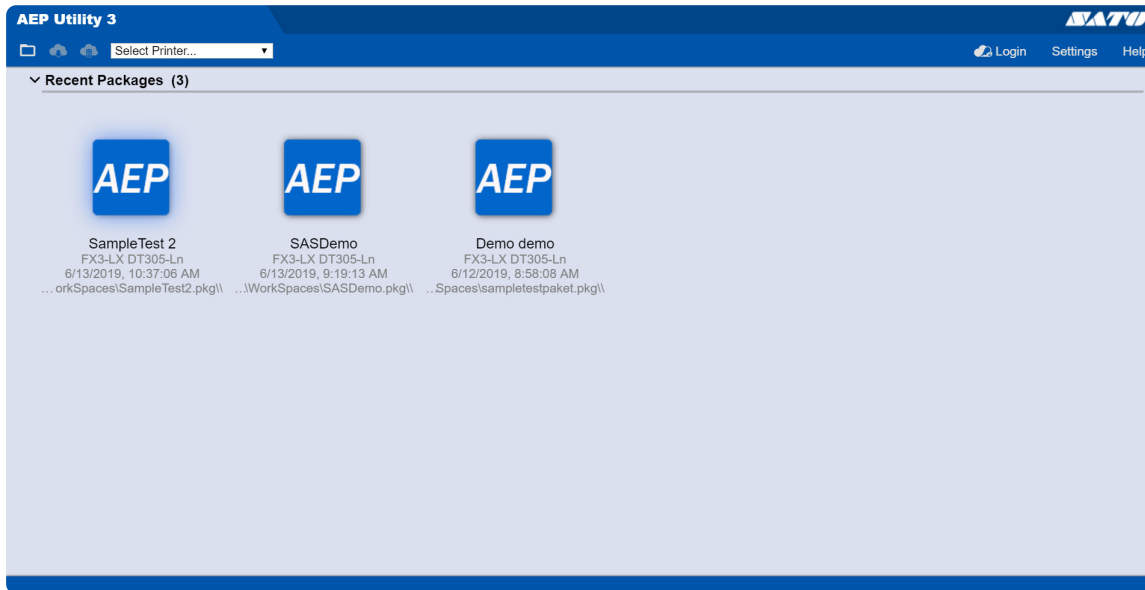


AEP Utility offers an intuitive interface environment to help managing your packages. This chapter provides an overview of the interface as well as knowledge of its basic elements and menus.

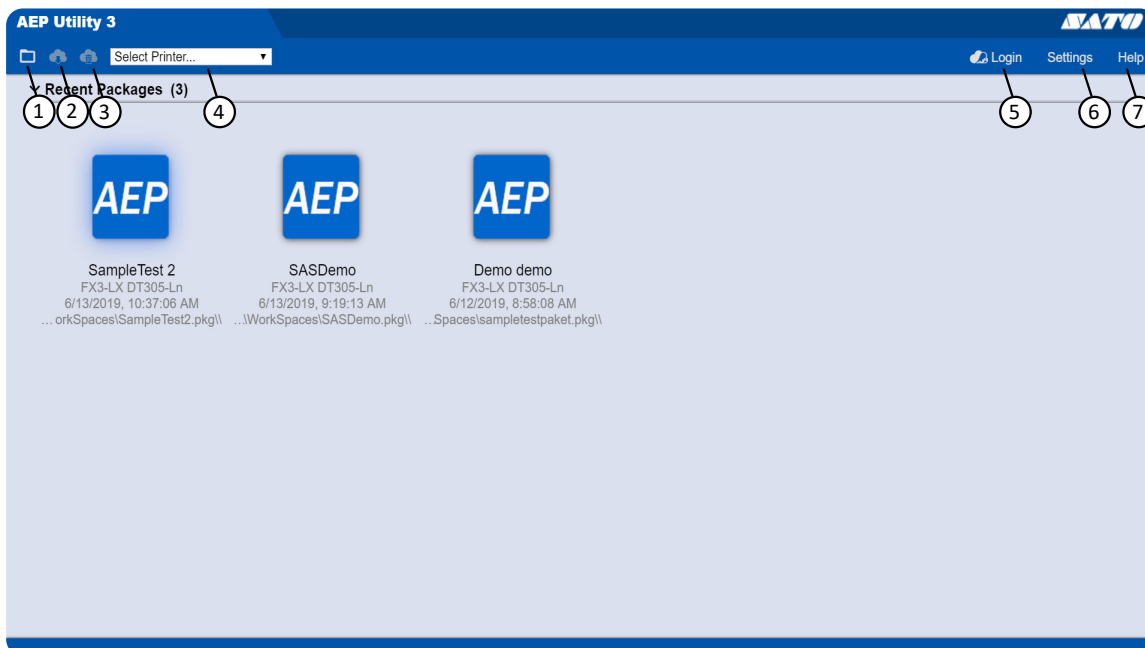
- Start Screen
- Package Overview
- Editors

Start Screen

The first window that appears after starting AEP Utility 3 is the start screen. It is the gathering point of all your recent packages.



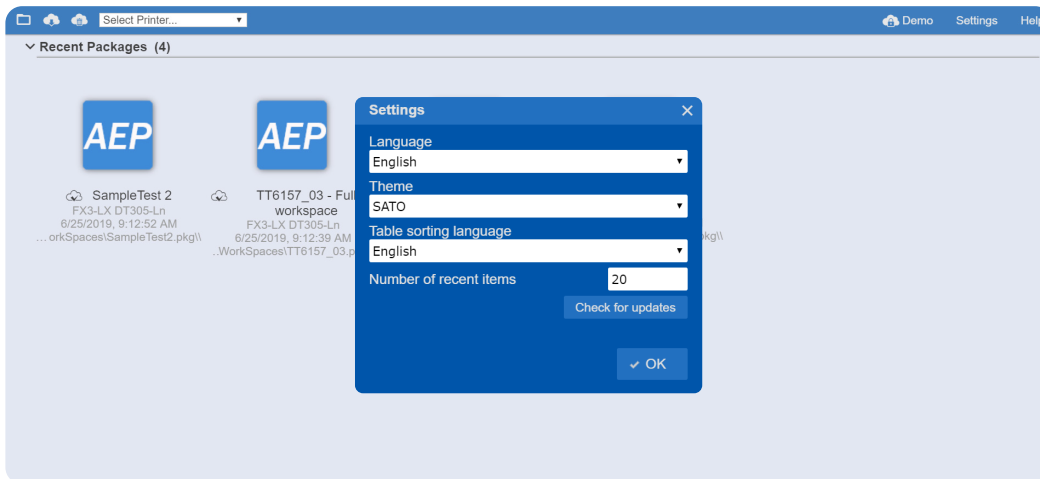
Start Toolbar



1. **Open:** Open an existing package.
2. **Download packages from SATO App Storage:** Download a package from SATO App Storage (only available if you are logged in to SATO App Storage).
3. **Delete files on SATO App Storage:** Delete files from the SATO App Storage (only available if you are logged in to SATO App Storage).
4. **Select Printer:** Select the targeted printer model.
5. **Log in to SATO App Storage:** Login to SATO App Storage cloud service.
6. **Settings:** Change language, and the appearance of the applications inside AEP Utility 3.
7. **Help:** Get help and information from the online PDF user manual.

Settings Dialog

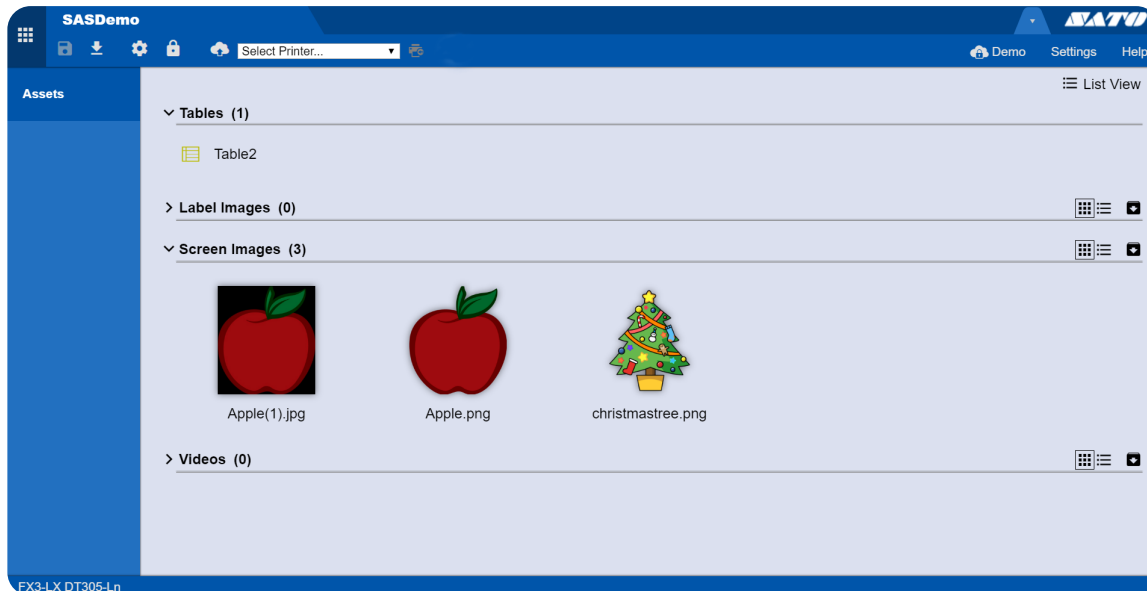
The following options for customization are:



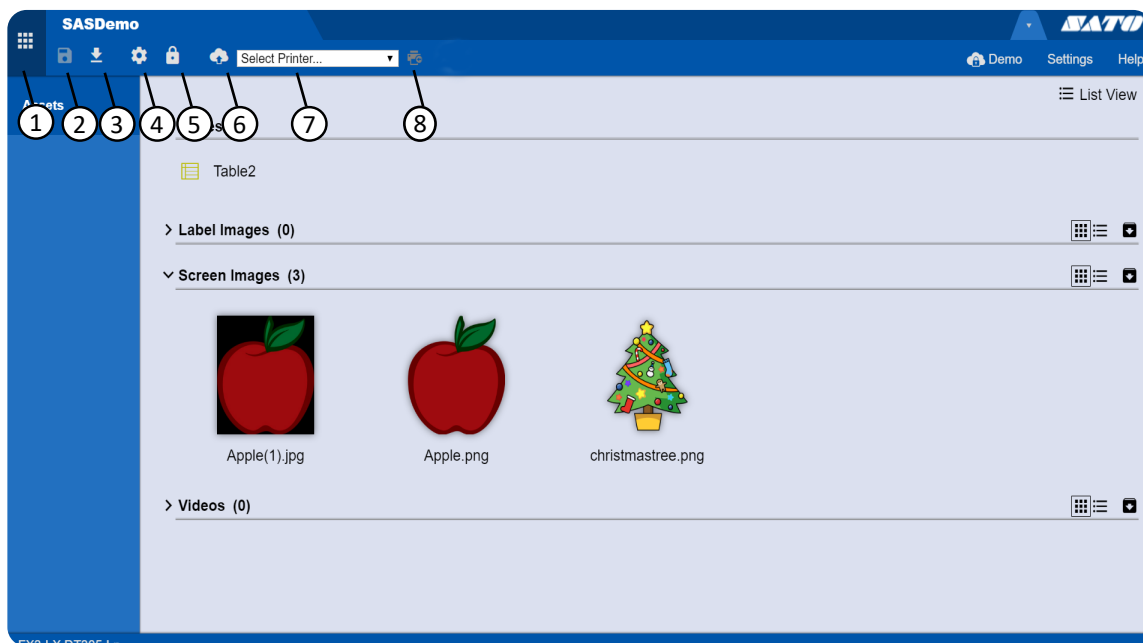
- **Language:** Choose which language to use inside AEP Utility 3.
- **Theme:** Choose which color theme to use inside AEP Utility 3.
- **Table sorting language:** Set the language to be used for sorting table columns alphabetically.
- **Number of recent items:** Choose the maximum amount of items shown under **Recent Packages**.
- **Check for updates:** Check for any available updates to your AEP Utility 3 application.

Package Overview

The package functions as a center for adding and viewing content for your printer applications. The package overview window shows all of your assets in the currently active package. From here it is possible to copy, delete, and export/import your files. It is also possible to change the properties of your screen images.



Package Toolbar



1. **Go Back:** Return to the previous screen.
2. **Save:** Save the currently active package.
3. **Save As:** Save the currently active package as a new file.
4. **Package Settings:** Open the settings menu for the currently active package.
5. **Lock Profiles:** Create and manage lock profiles.
6. **Publish to SATO App Storage:** Upload the currently active package to SATO App Storage.
7. **Select Printer:** Select an available printer to use as a target.
8. **Send to Printer:** Send the currently active package to the selected printer target.

Progress Bar

A progress bar will be shown in the footer area while uploading, downloading or deleting package file. An icon and characters (e.g. Downloading...) will be shown in flashing at the right side of the progress bar.

For uploading a3pc files, downloading and deleting multiple selected files, the progress bar will show 100% of the progress when the job of all files is completed.

When multiple processes are executed at the same time, only the progress bar of the process started earlier is shown.

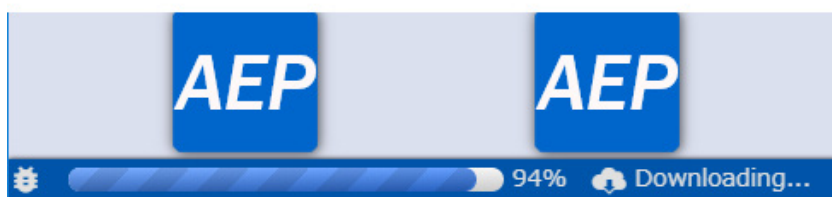
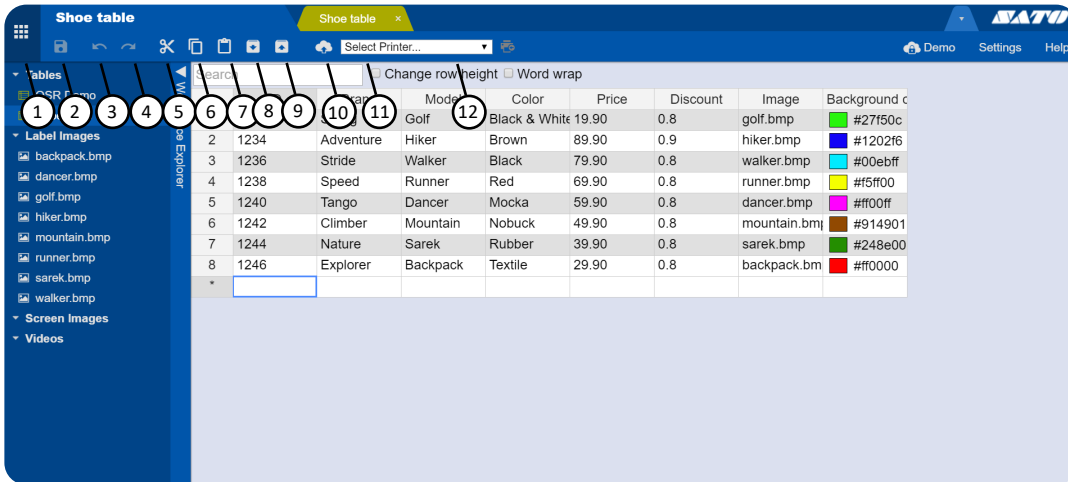


Table Editor




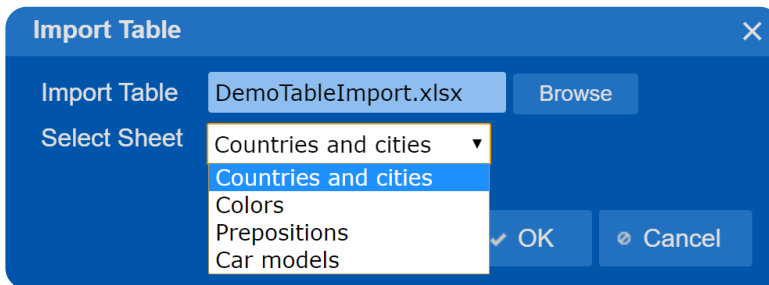
1. **Back:** Return to the previous screen.
2. **Save:** Save your progress in the currently active editor.
3. **Undo:** Undo the last action in the active editor.
4. **Redo:** Redo the last undo action in the active editor.
5. **Cut:** Cut out the value from a cell.
6. **Copy:** Copy the value from a cell.
7. **Paste:** Paste the last cut or copied value into a selected cell.
8. **Import:** Import a table from e.g. Microsoft Excel.
9. **Export:** Export the table data to a file (XML, CSV or XLSX).
10. **Publish to SATO App Storage:** Upload the currently active package to SATO App Storage.
11. **Select Printer:** Select an available printer to use as a target.
12. **Send to Printer:** Send the currently active package to the selected printer target.

Import Table

Import table data into the current table.


Excel file import

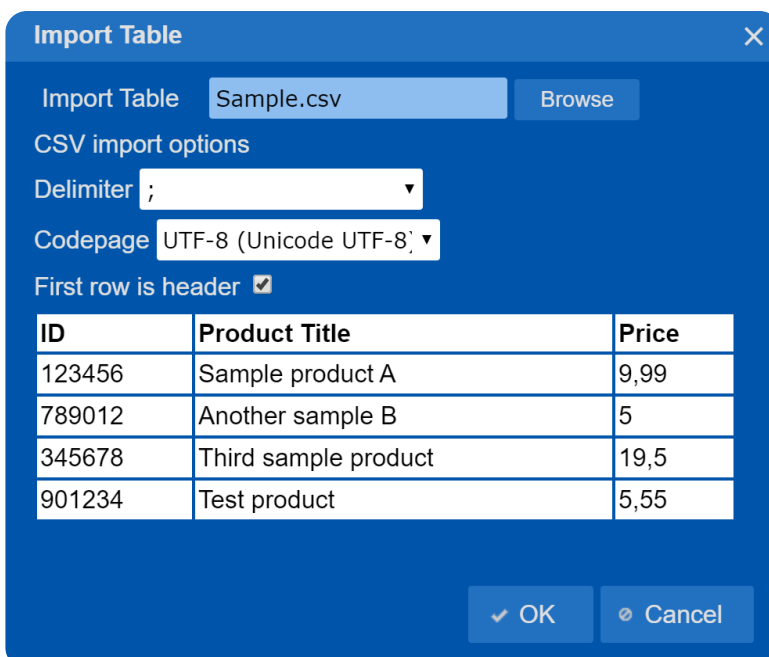
1. On the **Table Editor Toolbar**, click .
2. In the **Import Table** dialog, click **Browse**, select your file and click open.
3. In the **Select Sheet** box, select the preferred sheet to import.
4. Click **OK**.



NOTE: It is not possible to change the number of columns inside a table. Because of this, it is only possible to import a file that contains the same number of columns as the file in AEP Utility 3. The names of the columns must also match the names of the columns in the current table.

CSV file import

1. On the **Table Editor Toolbar**, click .
2. In the **Import Table** dialog, click **Browse**, select your file and click open.
3. In the **CSV import options**, set the following options:
Delimiter: Choose between comma, semicolon or colon.
Codepage: Select the preferred code page to use. (Default code page: UTF-8).
4. Select the **First row is header** check box, to use the first row in the import file as the table header that defines the column names.
5. Click **OK**.



3

Package

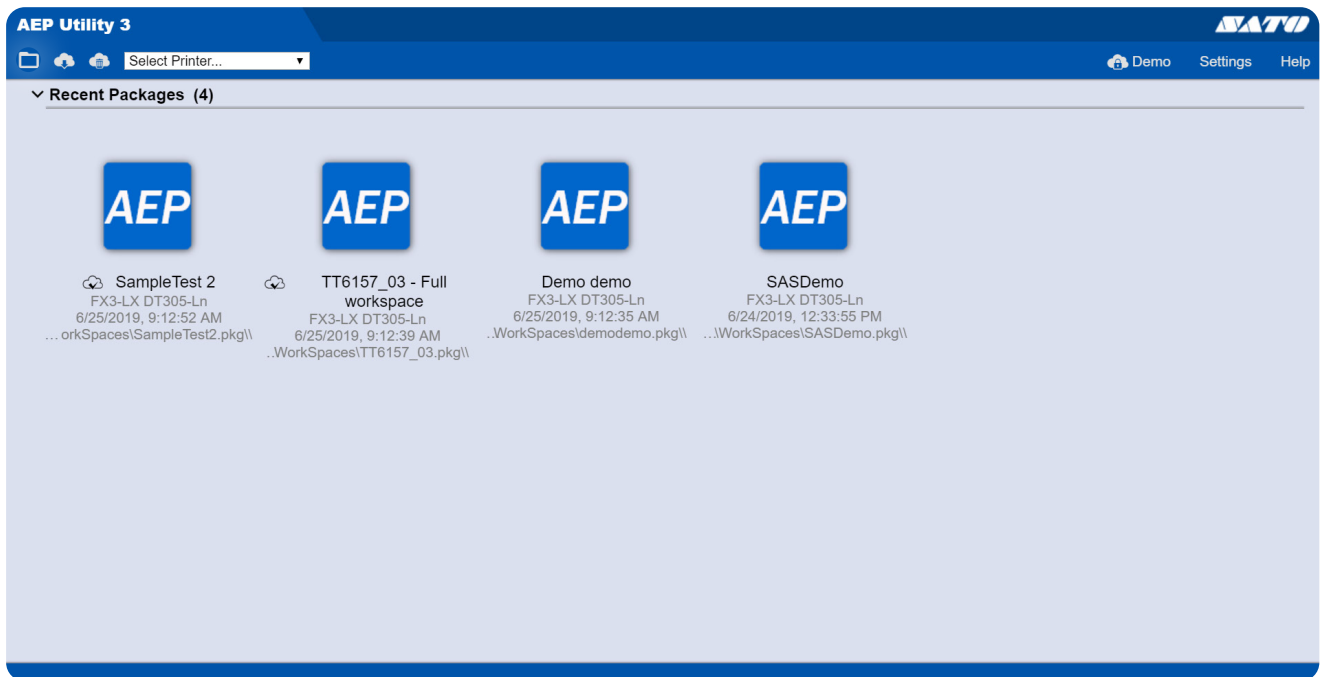


A package contains an application and related assets, and can be installed in a printer. These assets include tables, label images, screen images, and videos. Use AEP Utility 3 to add, modify or replace them.

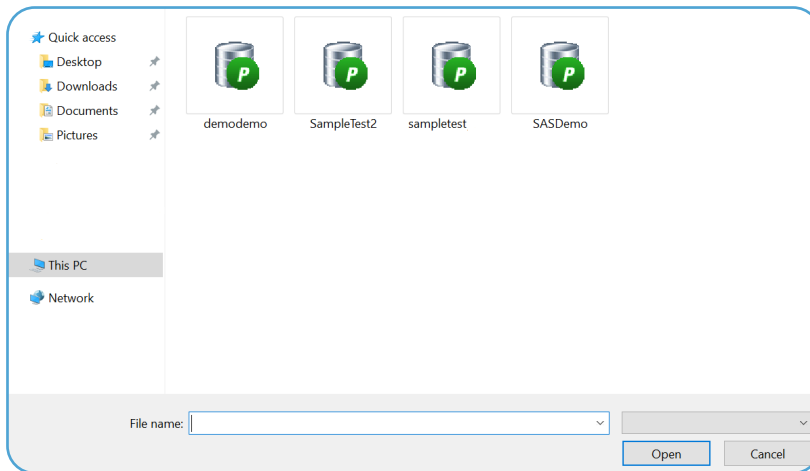
- Open Package
- Manage Recent Packages
- Manage Assets
- Locking Assets

Open Package

1. On the **Start Screen**, under **Recent Packages**, click **Open** .



2. Find the directory path for the desired package.

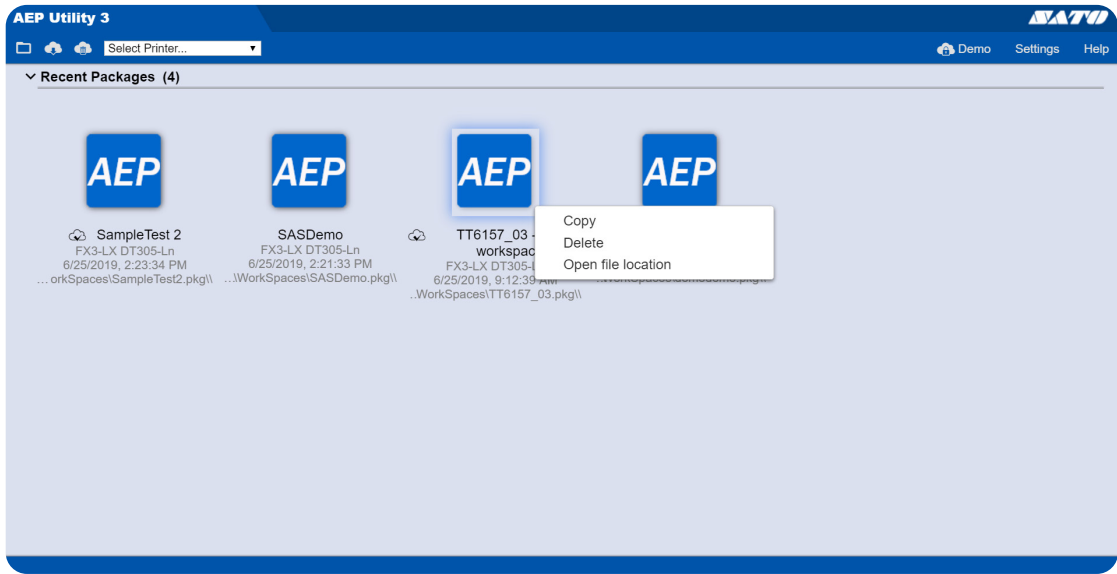


3. Select the package file that you want to open.
4. Click **Open**.

Manage Recent Packages

By right-clicking a package, you can manage it in the following ways:

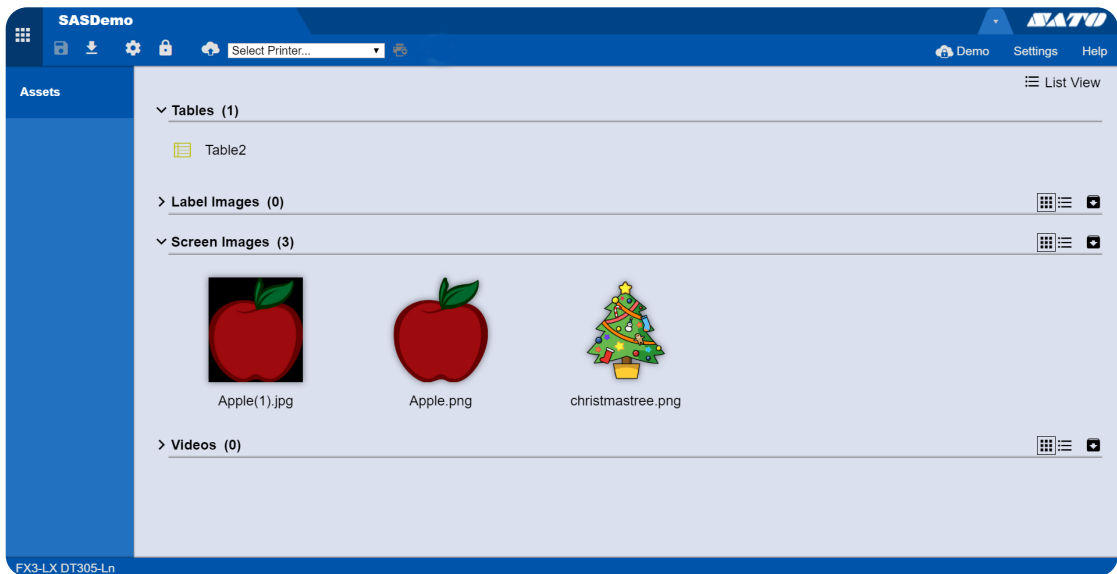
3



- **Copy:** Creates a new copy of the chosen package, and saves it locally.
- **Delete:** Deletes the chosen package from the **Recent Packages** list. This does not delete the file locally, it only removes the shortcut.
- **Open file location:** Opens the local directory of the package.

Manage Assets

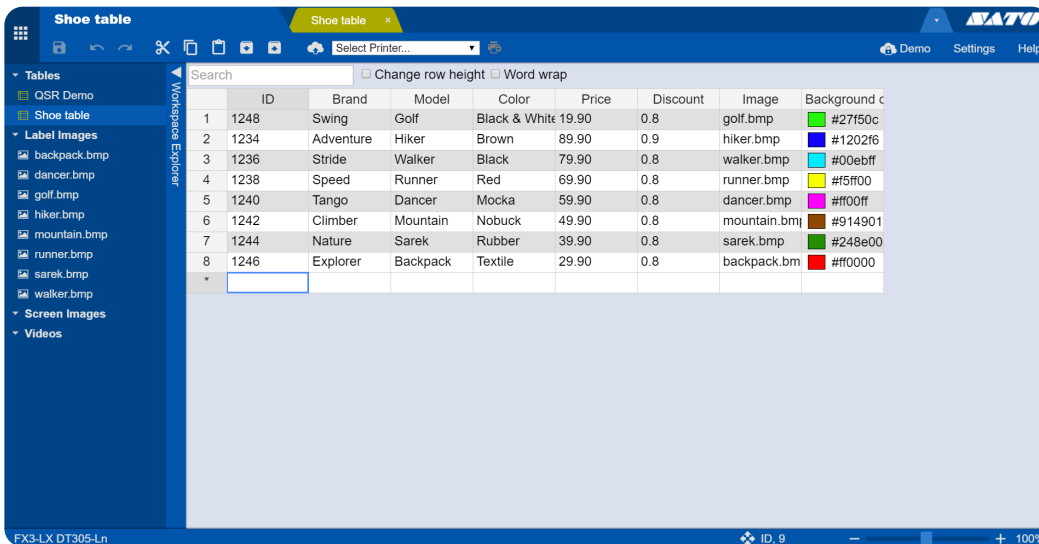
In every package, you can add, remove or replace assets within label images, screen images, and videos. New tables cannot be added, and existing tables cannot be removed, but the data inside a table can be exported as a new file.



Tables

You can import table data into an active table, e.g. from Excel. You can also choose to export already existing table data from your active table. For more information, see [Import Table](#).

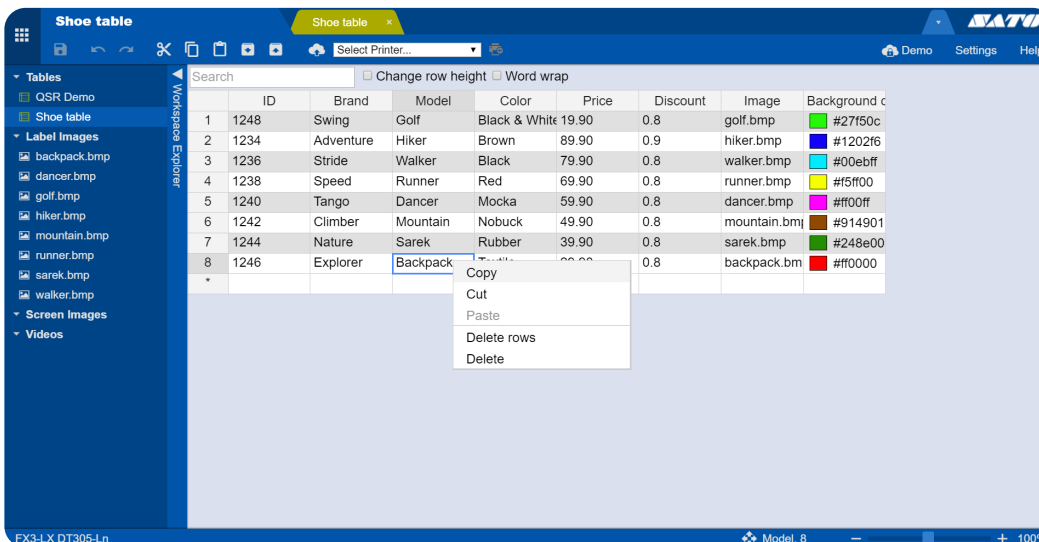
NOTE: It is not possible to change the number of columns inside a table. Because of this, it is only possible to import a file that contains the same number of columns as the file in AEP Utility 3. The names of the columns must also match the names of the columns in the current table.



	ID	Brand	Model	Color	Price	Discount	Image	Background c
1	1248	Swing	Golf	Black & White	19.90	0.8	golf.bmp	#27f50c
2	1234	Adventure	Hiker	Brown	89.90	0.9	hiker.bmp	#1202f6
3	1236	Stride	Walker	Black	79.90	0.8	walker.bmp	#00ebff
4	1238	Speed	Runner	Red	69.90	0.8	runner.bmp	#f5f00
5	1240	Tango	Dancer	Mocka	59.90	0.8	dancer.bmp	#ff00ff
6	1242	Climber	Mountain	Nobuck	49.90	0.8	mountain.bmp	#914901
7	1244	Nature	Sarek	Rubber	39.90	0.8	sarek.bmp	#248e00
8	1246	Explorer	Backpack	Textile	29.90	0.8	backpack.bmp	#ff0000

Manage Table Editor

By right-clicking a cell while inside an active table you can manage it in the following ways:



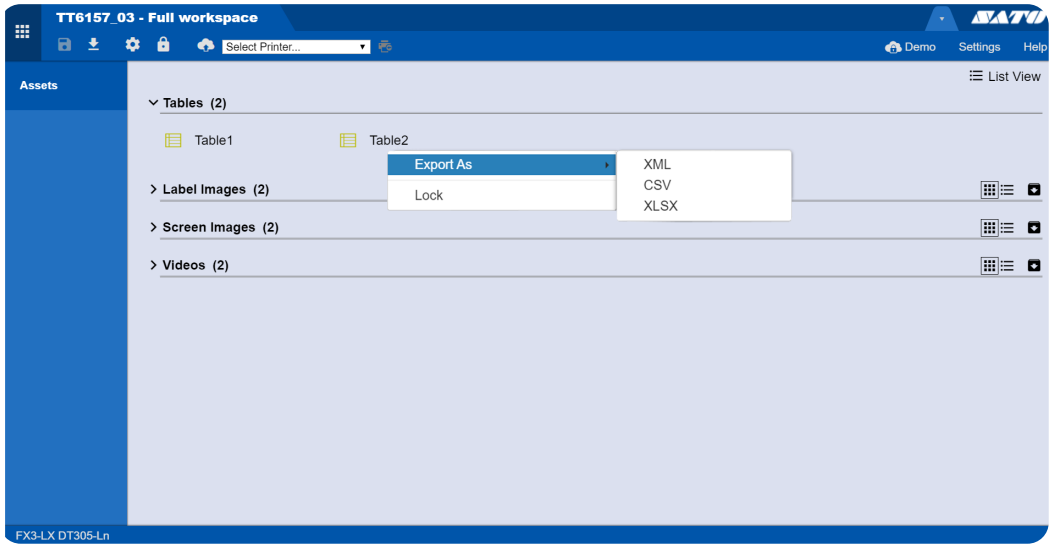
	ID	Brand	Model	Color	Price	Discount	Image	Background c
1	1248	Swing	Golf	Black & White	19.90	0.8	golf.bmp	#27f50c
2	1234	Adventure	Hiker	Brown	89.90	0.9	hiker.bmp	#1202f6
3	1236	Stride	Walker	Black	79.90	0.8	walker.bmp	#00ebff
4	1238	Speed	Runner	Red	69.90	0.8	runner.bmp	#f5f00
5	1240	Tango	Dancer	Mocka	59.90	0.8	dancer.bmp	#ff00ff
6	1242	Climber	Mountain	Nobuck	49.90	0.8	mountain.bmp	#914901
7	1244	Nature	Sarek	Rubber	39.90	0.8	sarek.bmp	#248e00
8	1246	Explorer	Backpack	Textile	29.90	0.8	backpack.bmp	#ff0000

- **Copy:** Copy the value from the selected cell.
- **Cut:** Cut out the value from the selected cell.
- **Paste:** Paste the last cut or copied value into a selected cell.
- **Delete rows:** Deletes the row.
- **Delete:** Deletes the value from the selected cell.

Manage Tables

By right-clicking a table while inside an active package you can manage it in the following ways:






3



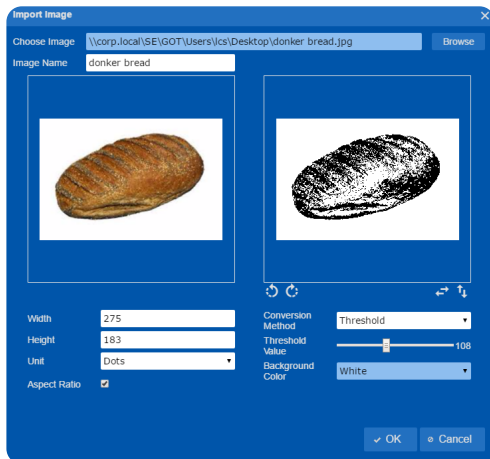
- **Export As XML:** Exports the chosen table as an XML file, and saves it locally on the computer.
- **Export As CSV:** Exports the chosen table as a CSV file, and saves it locally on the computer.
- **Export As XLSX:** Exports the chosen table as a XLSX file, and saves it locally on the computer.
- **Lock/Unlock:** Lock or unlock the chosen table.

Label Images

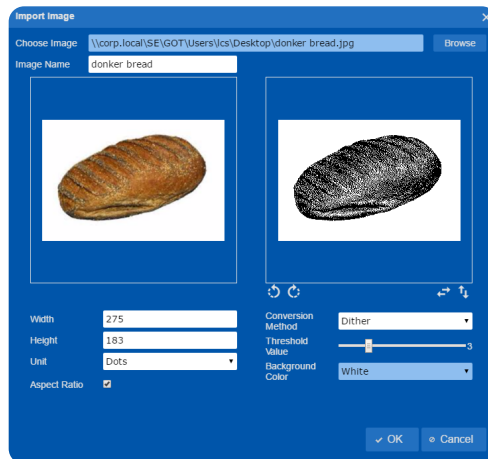
Import graphic content to your assets

1. Open the desired package.
2. On the **Label Images** tab, click , and the **Import Image** dialog pops up.
3. Click **Browse** and select an image from your library.
4. In the **Import Image** dialog, you are left with the following options:
 - Width:** Adjust the width of the label image.
 - Height:** Adjust the height of the label image.
 - Unit:** Change the unit of measure.
 - Aspect Ratio:** Lock the height and width ratio of the label.
 - Rotate:** Rotate left . Rotate right .
 - Flip:** Horizontal flip . Vertical flip .
 - Conversion Method:**
 - **Threshold:** Force all pixels below the threshold value into black.
 - **Dither:** Convert color pictures to black and white pictures.
 - **Threshold Value:** Set the threshold value.
 - **Background Color:** Set the background color to black or white.
5. Click **OK**.

Threshold

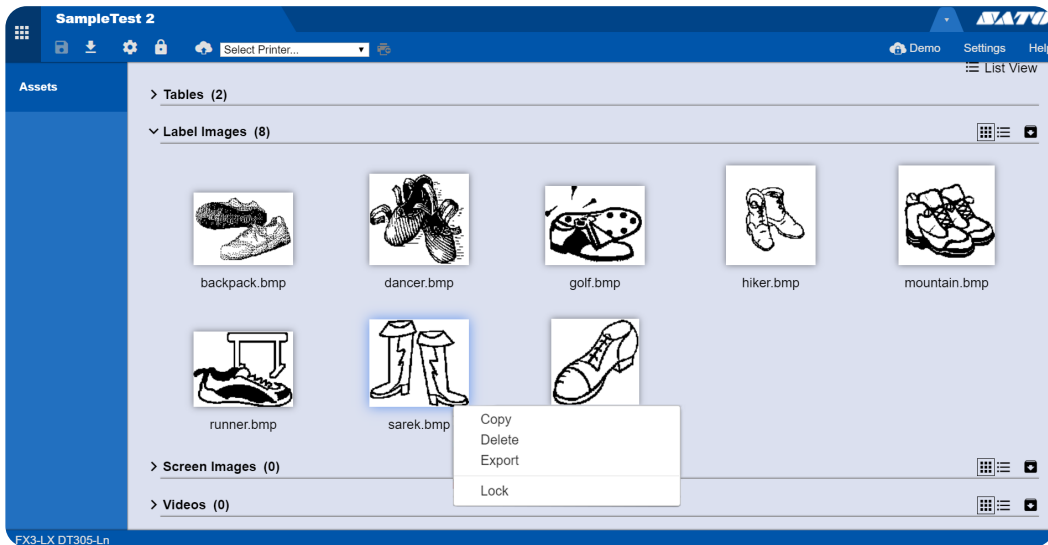


Dither



Manage Label Images

By right-clicking a label image while inside an active package you can manage it in the following ways:




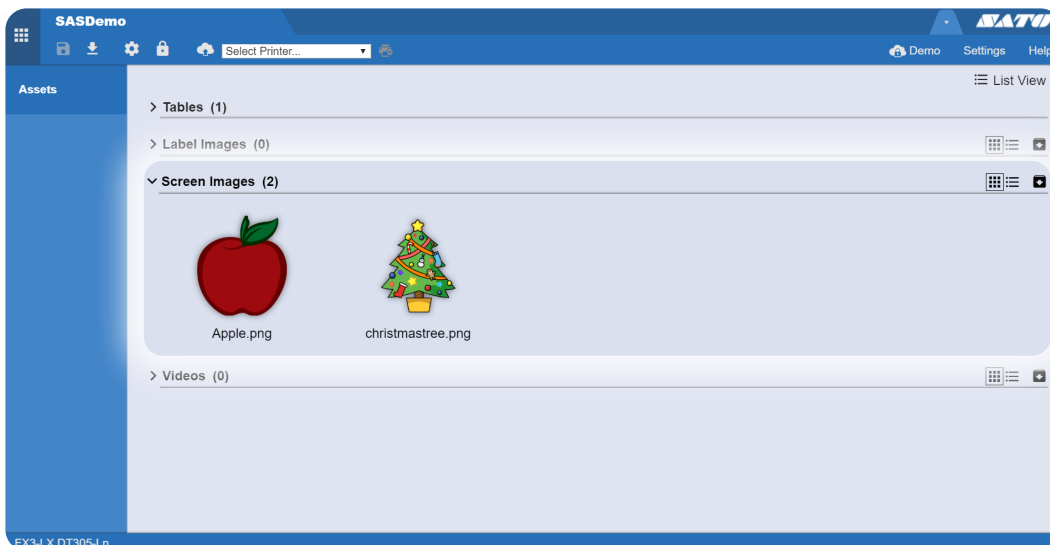
- **Copy:** Creates a new copy of the chosen label image.
- **Delete:** Deletes the chosen label image from the package.
- **Export:** Exports the chosen label image, and saves it locally on the computer.
- **Lock/Unlock:** Lock or unlock the chosen label image.

Screen Images

Import screen images to your package. Screen images can be graphical content such as product images, icons or logos.

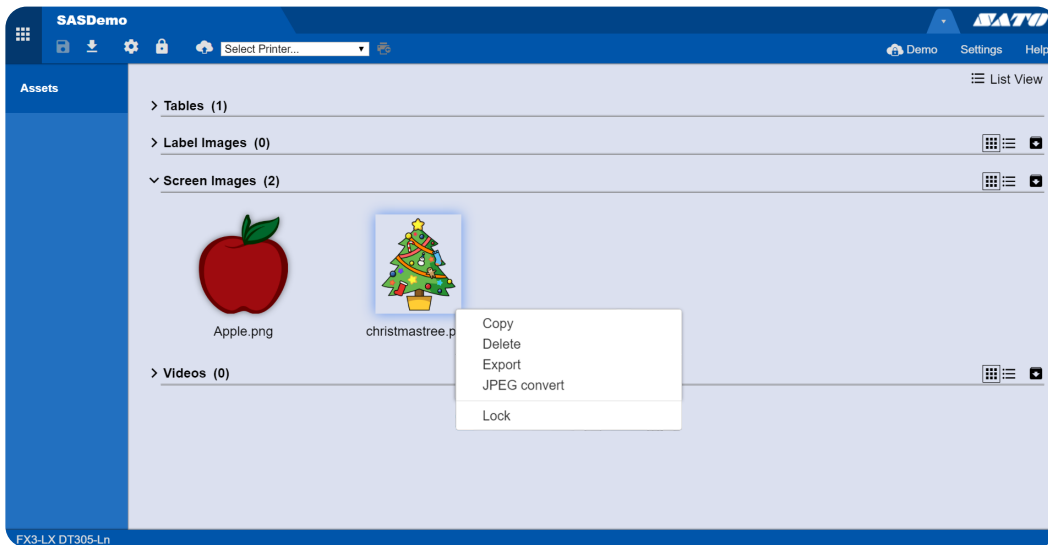
Import screen image

1. Open the desired package.
2. On the **Screen Images** tab, click .
3. Select an image from any directory.



Manage Screen Images


By right-clicking a screen image while inside an active package you can manage it in the following ways:

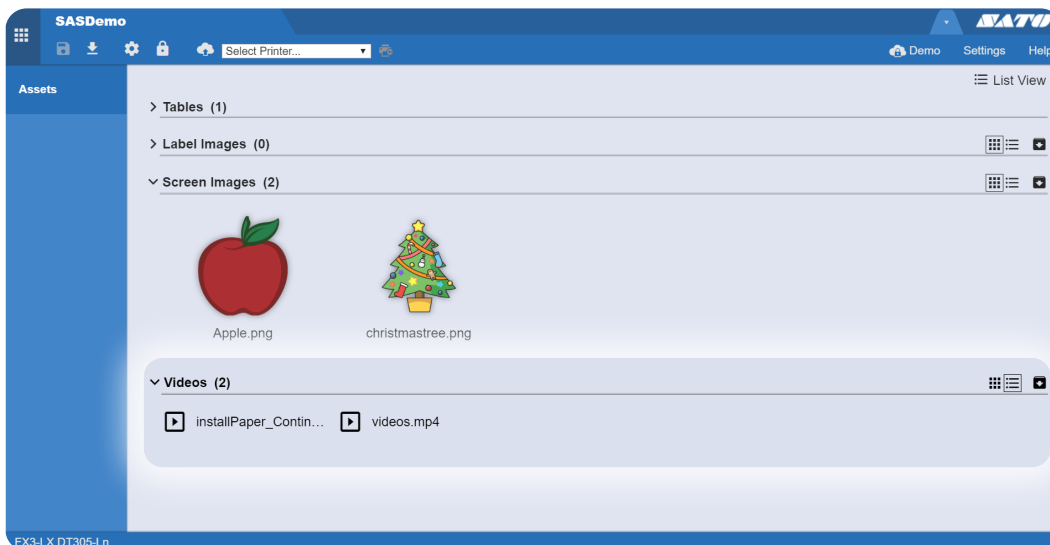


- **Copy:** Creates a new copy of the chosen screen image.
- **Delete:** Deletes the chosen screen image from the package.
- **Export:** Exports the chosen screen image, and saves it locally on the computer.
- **JPEG convert:** Creates a copy of the chosen screen image, and converted it to a JPEG file format.
- **Lock/Unlock:** Lock or unlock the chosen screen image.

Videos

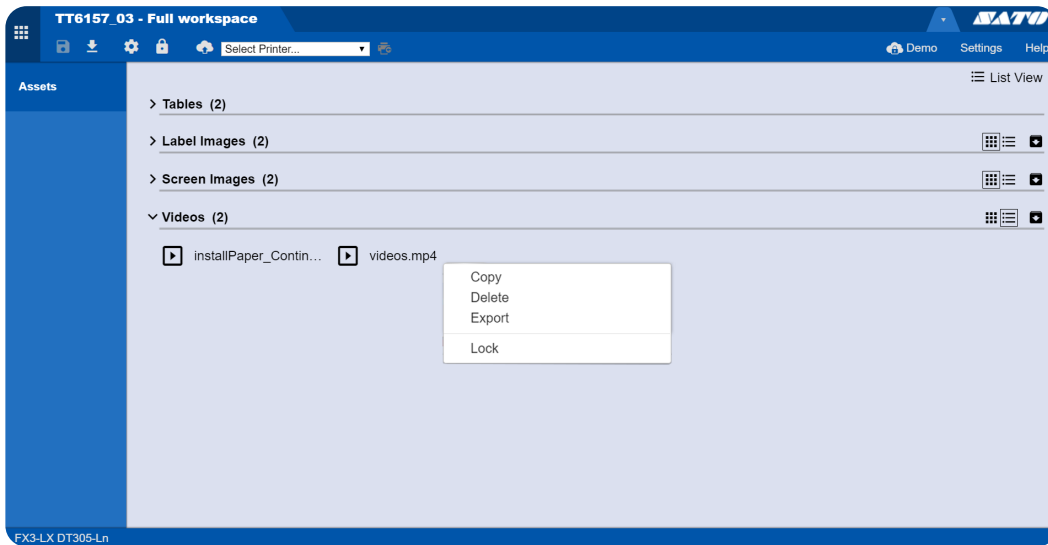
Import video content to your package

1. Open the desired package.
2. On the **Videos** tab, click .
3. Select a video from your library.



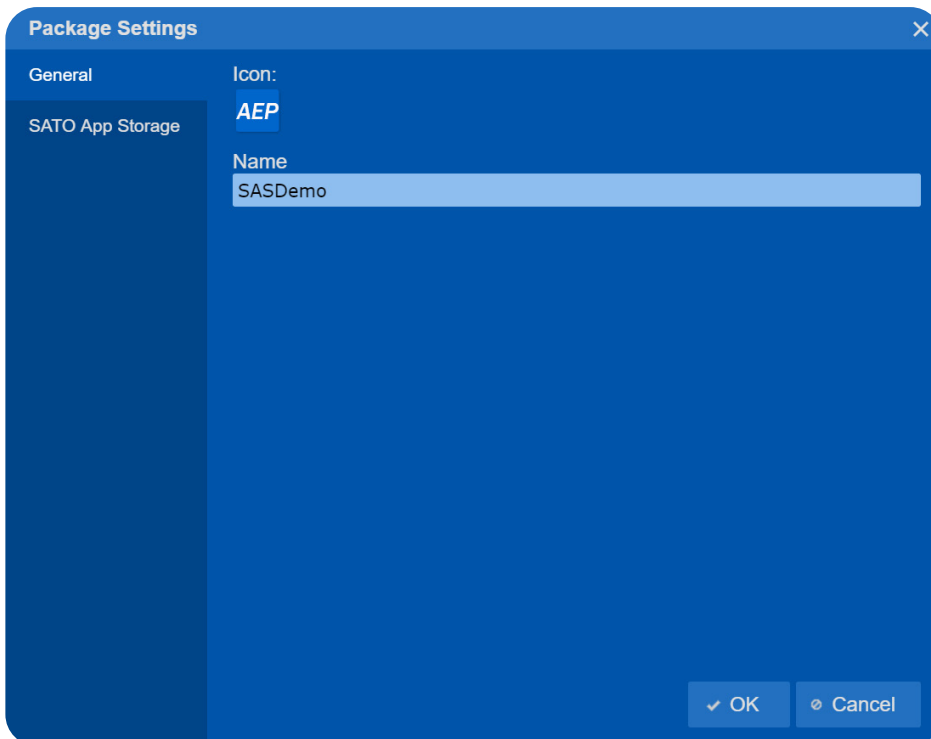
Manage Videos

By right-clicking a video while inside an active package you can manage it in the following ways:



- **Copy:** Creates a new copy of the chosen video.
- **Delete:** Deletes the chosen video from the package.
- **Export:** Exports the chosen video, and saves it locally on the computer.
- **Lock/Unlock:** Lock or unlock the chosen video.

Package Settings



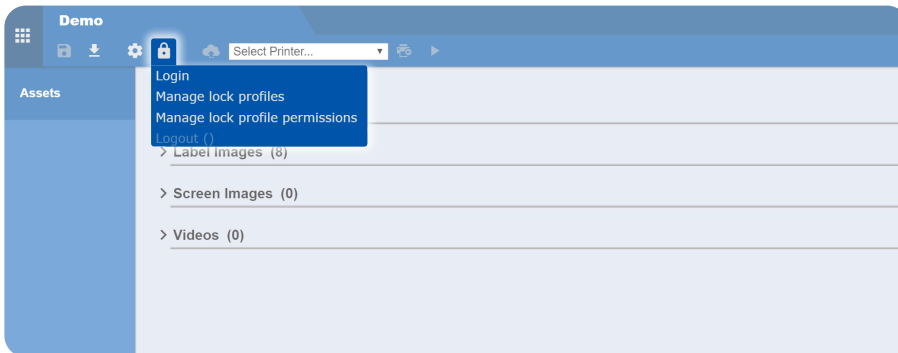
- **Icon:** Shows the icon of the active package.
- **Name:** Shows the name of the active package.


Locking Assets

In a package, assets can be locked to prevent read and write actions for users without a lock profile that holds valid permissions. Locks and different access levels (permissions) can be applied to tables, label images, screen images and videos.

Locking Assets Overview

Locking assets in a Package



 **Lock Profiles** in a package have the following options:

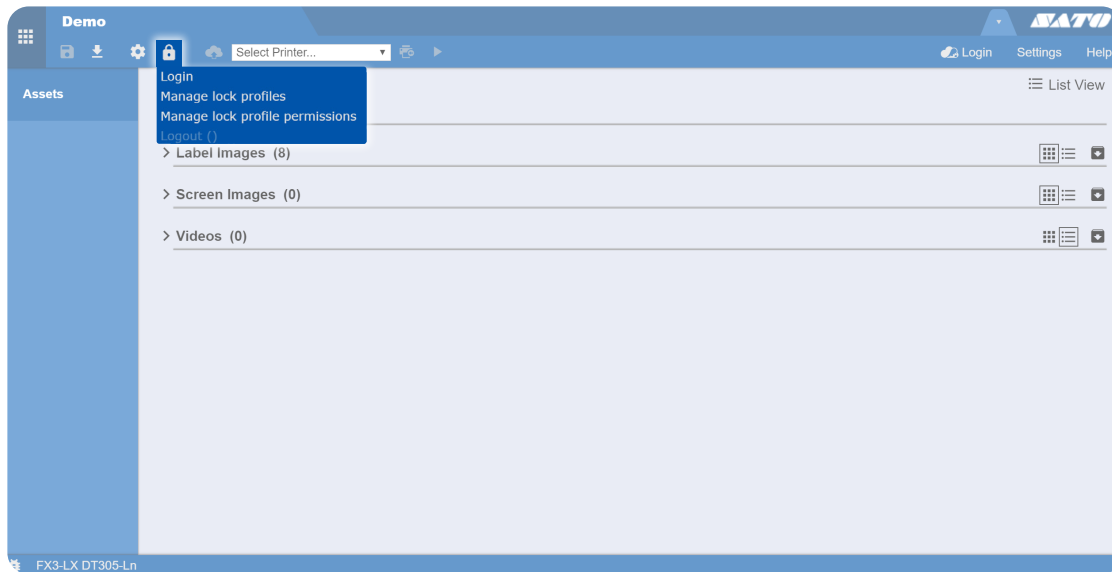
- **Login:** Login to a lock profile.
- **Manage lock profiles:** Create and manage lock profiles.
- **Manage lock profile permissions:** Apply locks and manage lock profile permissions.
- **Logout ():** Logout current lock profile (current lock profile is shown in parentheses).



Create Lock Profiles

Lock profiles provide different levels of asset accessibility within a package. It is possible to set up profiles that hold different permissions.

NOTE: To be able to create lock profiles in a package, a lock profile with admin access must be created in the AEP Works 3 workspace before building the package.

To create Lock Profiles in a Package



1. On the **Package Overview** toolbar, click .
2. In the list, select **Manage lock profiles**.
3. In the **Login** dialog, enter **Name** and **Password** for a profile with admin access.
4. Click **OK**.
5. In the **Lock Profiles** dialog, click  and enter the following:
 - **Profile Name:** Enter a name for the profile.
 - **Password:** Enter a profile password.
6. To create a profile with admin access, select **Can add, edit and remove lock profiles and their permissions**. If not selected, a regular Lock Profile will be created.
7. Click **OK**.

Dialog box titled "Login" with fields for "User Name" (Admin) and "Password" (masked). Buttons for "OK" and "Cancel" are visible.

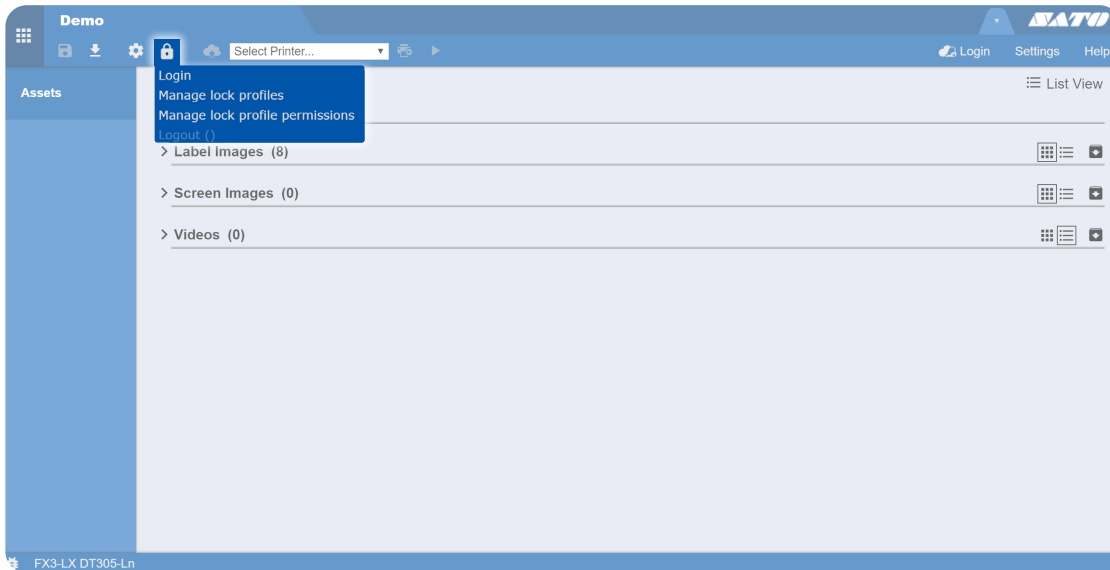
Dialog box titled "Lock Profiles" showing a list of profiles under "Admin". Fields for "Profile name" (Admin) and "Password" (masked) are visible. A checkbox "Can add, edit and remove lock profiles and their permissions" is checked. A plus sign (+) is visible below the list, and an "OK" button is at the bottom right.





Apply Locks and Permissions

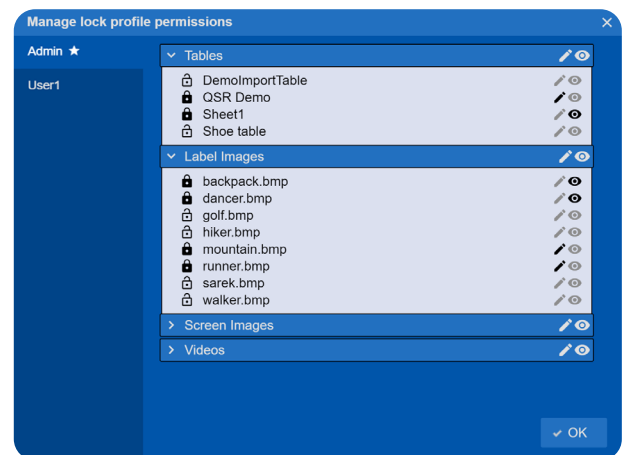
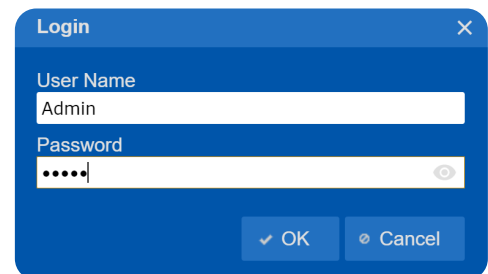
This function enables you to lock individual assets and to apply different access levels (permissions) to your lock profiles.


NOTE: To be able to apply locks and permissions in a package, a lock profile with admin access must be created in the AEP Works 3 workspace before building the package.

To Lock Assets in a Package



1. On the **Package Overview** toolbar, click .
2. In the list, select **Manage lock profile permissions**.
3. In the **Login** dialog, enter **Name** and **Password** for a profile with admin access.
4. Click **OK**.
5. In the **Manage lock profile permissions** dialog, select preferred lock profile.
6. Click on the preferred asset box (**Tables**, **Label Images**, **Screen Images** or **Videos**), and lists with the assets available in the respective asset category appears.
7. Click , to **Lock** the asset (in all lock profiles).
8. To set up permissions for the assets in the selected lock profile, choose between the following options:
 -  **Write permission:** The lock profile is given the permission to edit this asset.
 -  **Read permission:** The lock profile is given the permission to view this asset.
9. Click **OK**.



Repeat the above steps for each lock profile to set up different permissions.
To **Unlock** an asset, click .

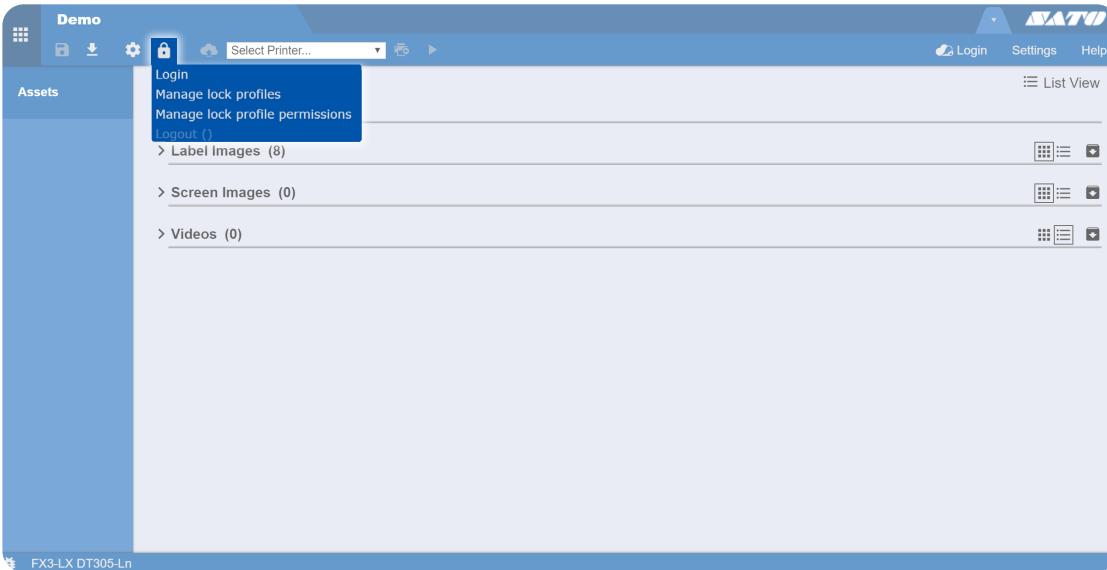
NOTE:





- Assets can also be locked from the **Workspace Explorer** menu or the different tabs in the **Assets** menu. **Right-Click** on the asset and select **Lock** on the context menu to lock the asset.
- Admin lock profiles are distinguished from regular lock profiles by a star added to the end of their name in the left panel. They will always have full access to all assets, and their permissions can therefore not be restricted.

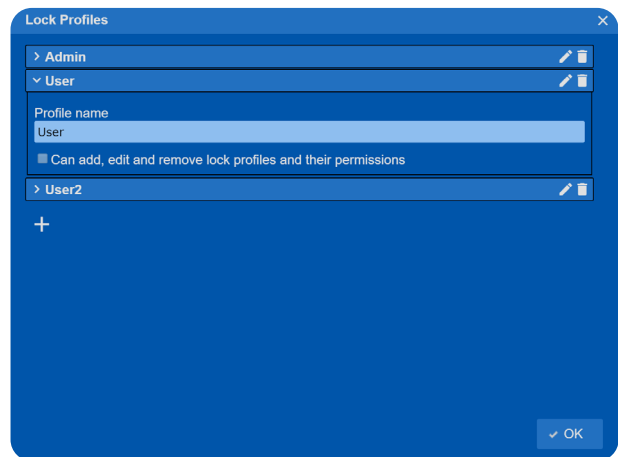
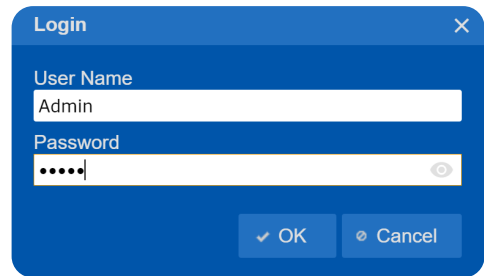
Manage Lock Profiles

To Manage Lock Profiles in a Package

3



1. On the **Package Overview** toolbar, click .
2. In the list, select **Manage lock profiles**.
3. In the **Login** dialog, enter **Name** and **Password** for a profile with admin access.
4. In the **Lock Profiles** dialog, click on the preferred Lock Profile box.
5. If preferred, click  to **Edit profile**, and the following settings are available:
 - **Profile name:** Edit the profile name.
 - **Password:** Edit the profile password.
 - **Can add, edit and remove lock profiles and their permissions:** Select this option to give the current profile admin access. Deselect this option to remove admin access from a profile.
6. If preferred, click  to **Remove** the Lock Profile.
Deleting the last admin lock profile of a package will prompt a warning dialog, since lock permissions cannot be edited in a package without one.
7. If preferred, click  to **Create new profile** and follow the steps in [Create Lock Profiles](#).
8. Click **OK**.



NOTE: To be able to manage lock profiles in a package, a lock profile with admin access must be created in the AEP Works 3 workspace before building the package.

4

SATO App Storage



SATO App Storage is a cloud storage space for your company files. Package files can be published and saved to SATO App Storage, and connected printers can be configured to receive automatic updates from SATO App Storage.

NOTE: Currently, only a printer of the model FX3 can receive updates and packages from SATO App Storage. Other printer models are still able to send packages to the printer locally, via AEP Utility 3.

- Logging in to SATO App Storage
- Identifying a SATO App Storage-connected Package
- Manage Packages with SATO App Storage


Logging in to SATO App Storage

To log in to SATO App Storage you need to use the account information provided by the administrator when you received your SATO App Storage account.

Log in to SATO App Storage

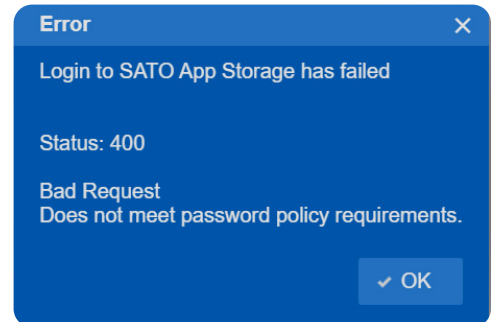
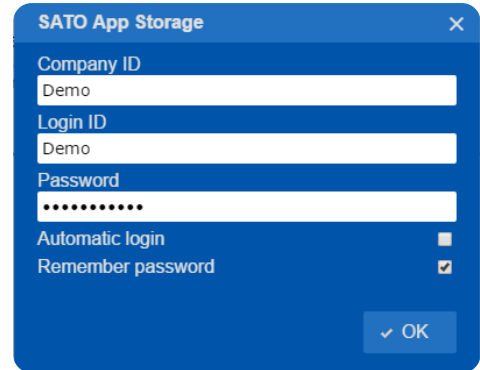
4

1. On the start screen of AEP Utility 3, click **Login**.
2. In the **SATO App Storage** dialog, enter the following information:
 - **Company ID:** The ID of the company.
 - **Login ID:** Your login ID or username.
 - **Password:** Your password.
3. **Optional:** The following options are available:
 - **Automatic login:** Set whether or not to sign in to SATO App Storage automatically upon starting AEP Utility 3.
 - **Remember password:** Set whether or not AEP Utility 3 remembers the user information.You can always turn these options on or off from the **Login** menu.
4. Click **OK**.

To confirm a successful login session the **Login** button is replaced with your login ID and the **cloud icon** to the left of your login ID shows a lock inside. 

NOTE: If login failure occurs:

- A box with an error message will appear, showing why the login failed.
- Read through the error message and click **OK**.
- Verify that login credentials are entered correctly.
- If login still fails, please contact your administrator.



Identifying a SATO App Storage-connected Package

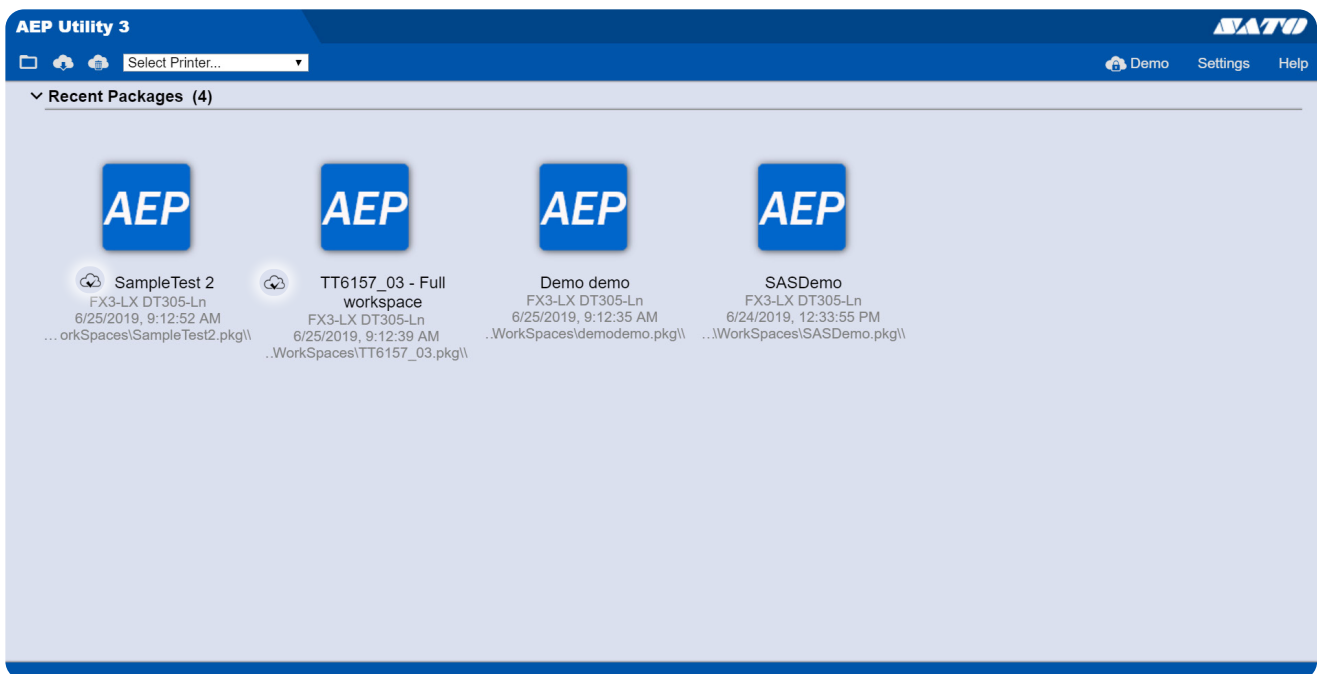
When you are using AEP Utility 3 and you are logged in to SATO App Storage, a small cloud icon indicates cloud-connected packages. If the cloud icon is shown to the left of a package name, it means that the package is published to SATO App Storage.

If no cloud icon is shown, it means that the package is currently not connected to SATO App Storage.

NOTE: There is no automatic synchronization keeping a downloaded package updated with the original file. To receive updates to a package, you need to manually download the package from SATO App Storage.


If you use the same login ID that was used when uploading the package, AEP Utility 3 replaces the package. If you use a different login ID, AEP Utility 3 creates a new package instead.

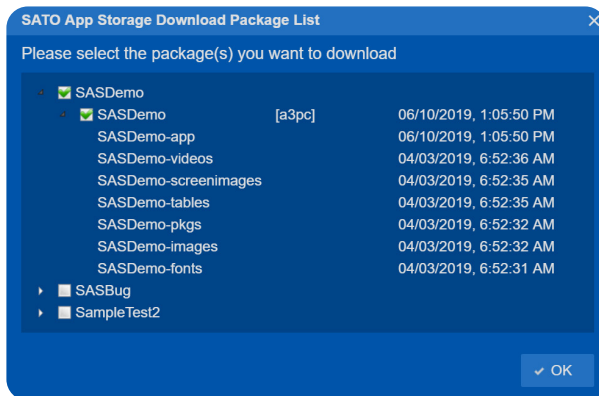
For information on how to manually upload and connect a package, go to [Upload Package to SATO App Storage](#).



Manage Packages with SATO App Storage

Download Package

1. On the start screen of AEP Utility 3, click .
2. Choose which package(s) to download by selecting the check box (multiple choices possible) to the left of the package name(s).
3. Click **OK**.
4. Choose a folder to locally save chosen package(s).
5. Click **Save**.



NOTE: If a file with the same name already exists, or if no folder has been created to locally save packages, see instructions below.

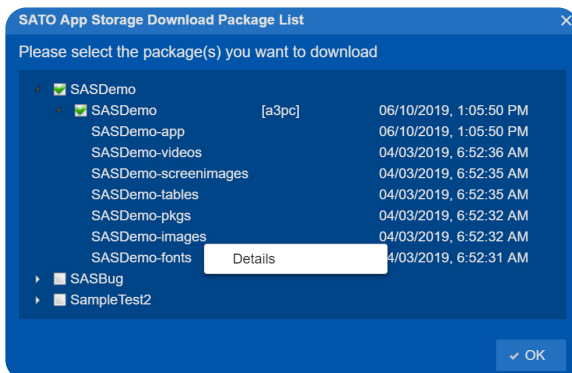
For saving a new package with an already existing name, choose one of the following options:

- Rename one of the packages. This option will let you keep both files in case you need a backup.
- When asked if you want to overwrite the existing file, click **OK**. This replaces the older file, which then cannot be used as a backup.

Create a folder for saving packages:

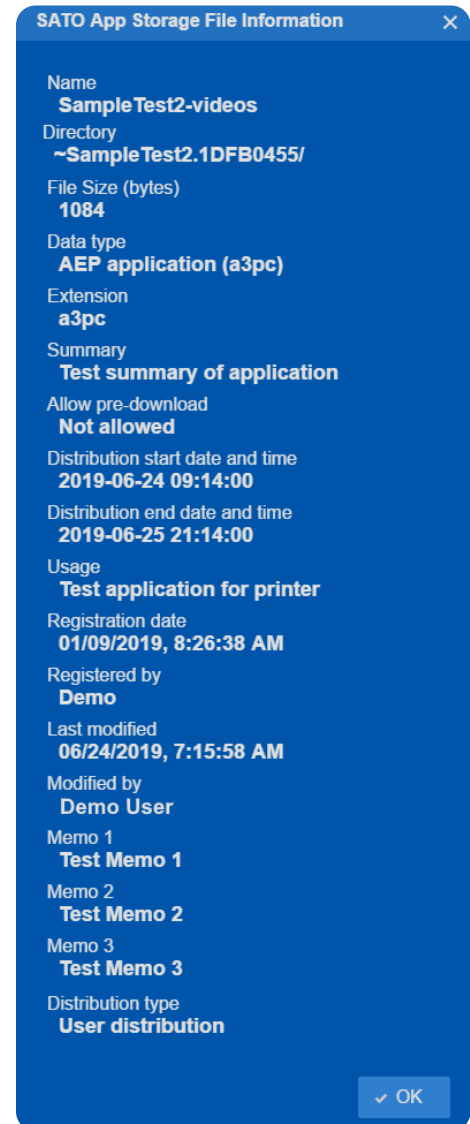
1. Create a folder on any destination.
2. Give the folder a name, e.g. "Packages".
3. Repeat steps 1-5 in the download package instructions.

To see a detailed view of a package before downloading it, right-click on the package name and click **Details**.



The **SATO App Storage File Information** window shows the following information

- **Name:** The name of the selected file.
- **Directory:** Shows the directory path on SATO App Storage where the application is located.
- **File Size (bytes):** The size of the selected file in bytes.
- **Data type:** Which type of data the selected file consists of.
- **Extension:** The format of the selected file.
- **Summary:** A summary written by the user that uploaded the selected file to SATO App Storage.
- **Allow pre-download:** Whether or not the selected file is available to be downloaded ahead of the release date.
- **Distribution start date and time:** Date and time for when the application is downloadable.
- **Distribution end date and time:** Date and time for when the application is no longer downloadable.
- **Usage:** Usage of the application.
- **Registration date:** The date when the selected file was uploaded to SATO App Storage.
- **Registered by:** Shows which user uploaded the selected file to SATO App Storage.
- **Last modified:** The date when the selected file was last modified.
- **Modified by:** Shows which user made the most recent modification.
- **Memo 1:** A note from the publishing user.
- **Memo 2:** A note from the publishing user.
- **Memo 3:** A note from the publishing user.
- **Distribution type:** Which type of distribution the selected file is used for.




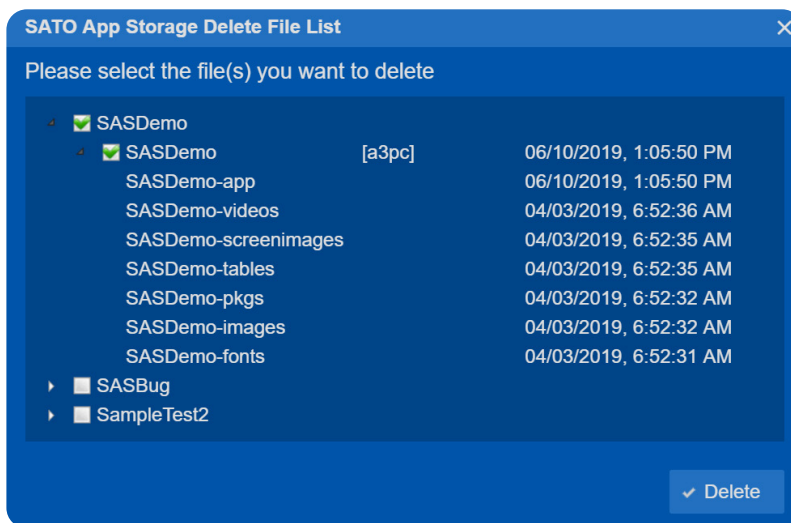
Delete Files from SATO App Storage

NOTE: When you delete files from SATO App Storage, they will be deleted from the cloud for all users. Which files you have access to is limited by the access level of the currently logged in account.

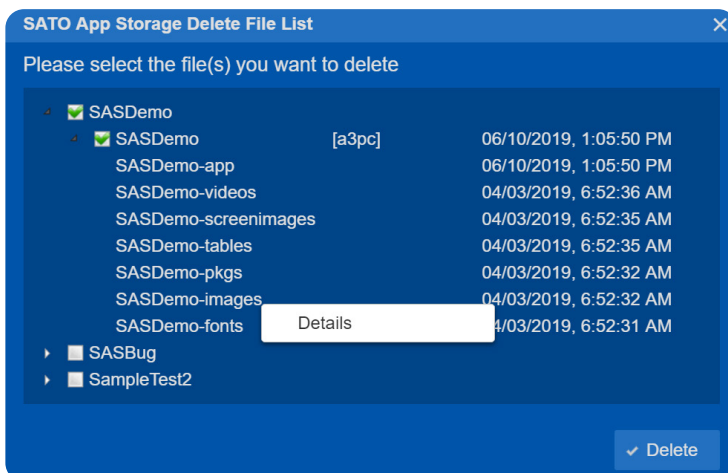
It is recommended that you save all packages locally before attempting to delete a file from SATO App Storage. This is a precaution in case of accidental deletion of a file that has no backup. Locally saved files can be used as a backup, and be manually uploaded again, even if a file has been deleted from SATO App Storage.

Delete files from SATO App Storage:

1. On the start screen of AEP Utility 3, click .
2. Choose which package(s) should be deleted by selecting the check box to the left of the package name.
3. Click **OK**.




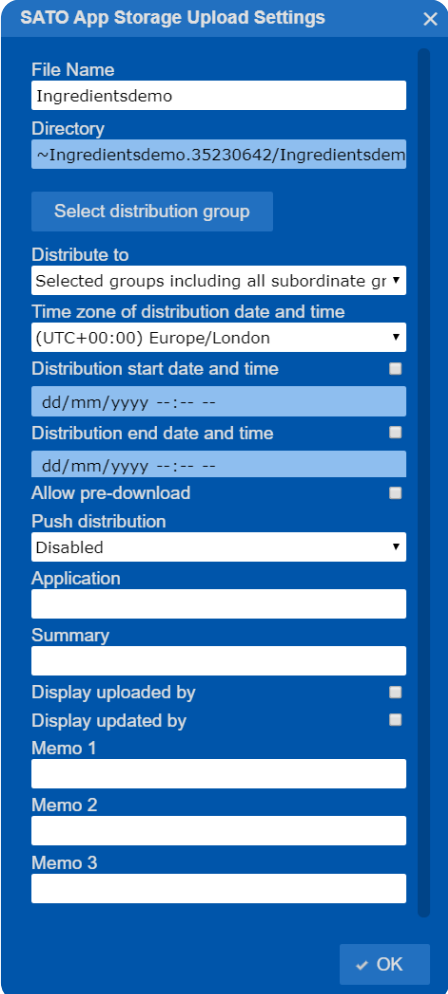
To see a detailed view of a package before deleting it, right-click on the package name and click **Details**. For more information go to [Manage Packages with SATO App Storage](#).



Upload Package to SATO App Storage

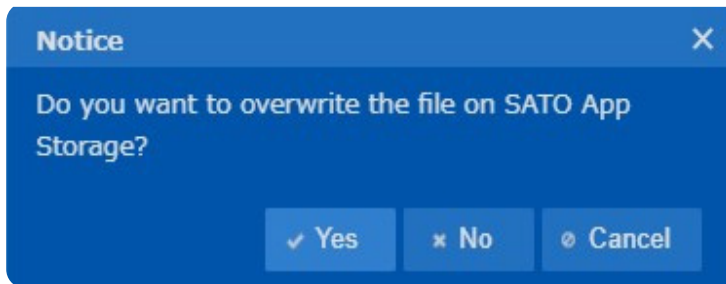
Upload Your Local Packages to SATO App Storage

1. Open the package that you want to upload to SATO App Storage.
2. On the toolbar, click **Publish to SATO App Storage** .
3. On the **SATO App Storage Upload Settings** menu, the following options are **required**:
 - **File Name**: Enter the name of the file.
 - **Directory**: AEP Utility 3 automatically specifies the directory parameter. This means that the directory is read-only, and the user cannot edit it.
 - **Distribute to**: Choose if distribution includes subordinate groups and/or users, or applies only to the selected groups.
 - **Time zone of distribution date and time**: Choose what time zone AEP Utility 3 assumes for the file distribution.
4. On the **SATO App Storage Settings** menu, the following options are **optional**:
 - **Select distribution group**: Choose which group(s) (multiple choices possible) have access to the file. For more information regarding this feature, go to [Distribute to Groups](#).
 - **Distribution start date and time**: If selected, choose a start date and time from which the file is available to download.
 - **Distribution end date and time**: If selected, choose an end date and time from which the file is unavailable for download.
 - **Allow pre-download**: Select whether or not the selected file is available to be downloaded ahead of the release date. This option is not shown if the targeted printer/firmware does not support the **Allow pre-download**.
 - **Push distribution**: Select to enable/disable push distribution when uploading package. This option is not shown if the targeted printer/firmware does not support the **Push distribution** or when the customer account does not have a signed contract for push functionality.
 - **Application**: Enter the purpose of the file.
 - **Summary**: Enter an explanation of the file.
 - **Display uploaded by**: Select the check box to show which login account has uploaded the current file.
 - **Display updated by**: Select the check box to show which login account has updated the current file.
 - **Memo 1**: Description of the file distribution.
 - **Memo 2**: Description of the file distribution.
 - **Memo 3**: Description of the file distribution.
5. Click **OK**.



NOTE: If the packages file with the identical name already exists, a dialog prompts you to choose among the following options:

- **Yes** - Upload and overwrite file
- **No** - Upload and rename file
- **Cancel or X** - Cancel and close the file upload..



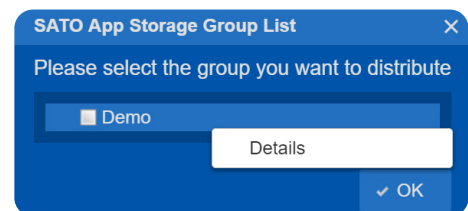
Distribute to Groups

Specify Group Distribution

1. On the **SATO App Storage Upload Settings** menu, click **Select distribution group**.
2. On the **SATO App Storage Group List**, select the check box for the group(s) (multiple choices possible) that you want to distribute the file to.

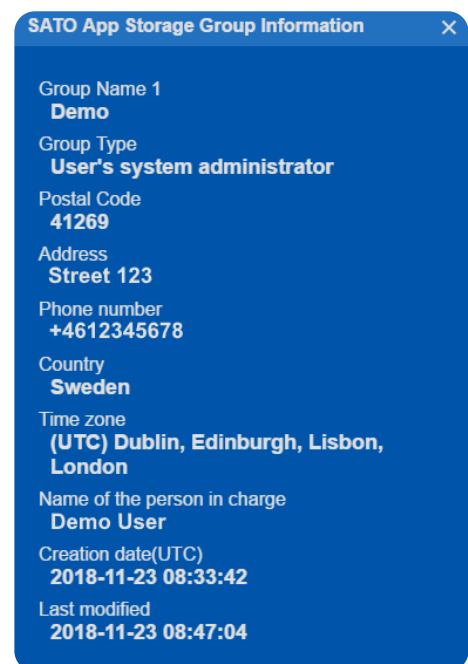
NOTE: For more information regarding a group or subordinate group, right-click on the name of the group and click **details**. For more information regarding **SATO App Storage Group List** and **SATO App Storage Group Information**, see information below.

3. Click **OK**.



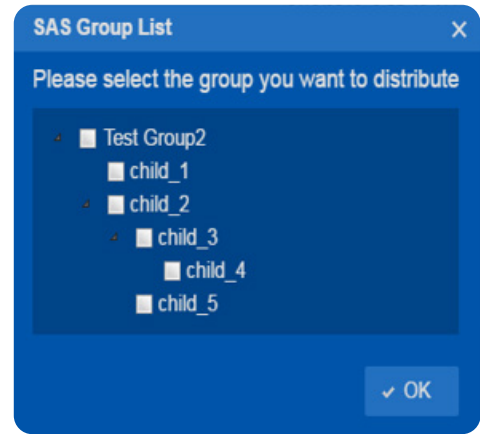
The **SATO App Storage Group Information** window shows the following information

- **Group Name 1:** The name of the selected group.
- **Group Name 2:** Optional. Shown only if the group has an additional name, otherwise, this is hidden from the list.
- **Group Type:** The type of the selected group.
- **Postal Code:** The postal code that is associated with the selected group.
- **Address:** The address that is associated with the selected group.
- **Phone Number:** The phone number that is associated with the selected group.
- **Country:** The country that is associated with the selected group.
- **Time zone:** The time zone that is associated with the selected group.
- **Name of the person in charge:** The name of the person with the main responsibilities for the selected group.
- **Creation date(UTC):** The date when the group was created.
- **Last modified:** The date and time when the group was last modified.



Group Options for Distribution

SATO App Storage Group List shows groups that you have access to. Subordinate groups are identifiable by being placed slightly more to the right in the box. By clicking the **triangle** you can collapse/expand a group to show associated subordinate groups.



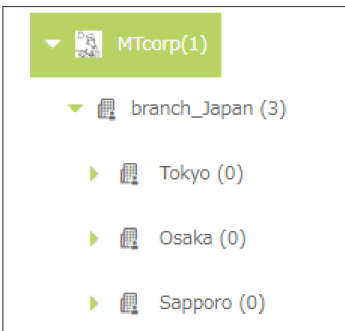
Acquisition of the Set Value for Distribution Group and Distribution Type

This is an example showing how to input the upload setting when uploading the package.

Upload Settings Dialog

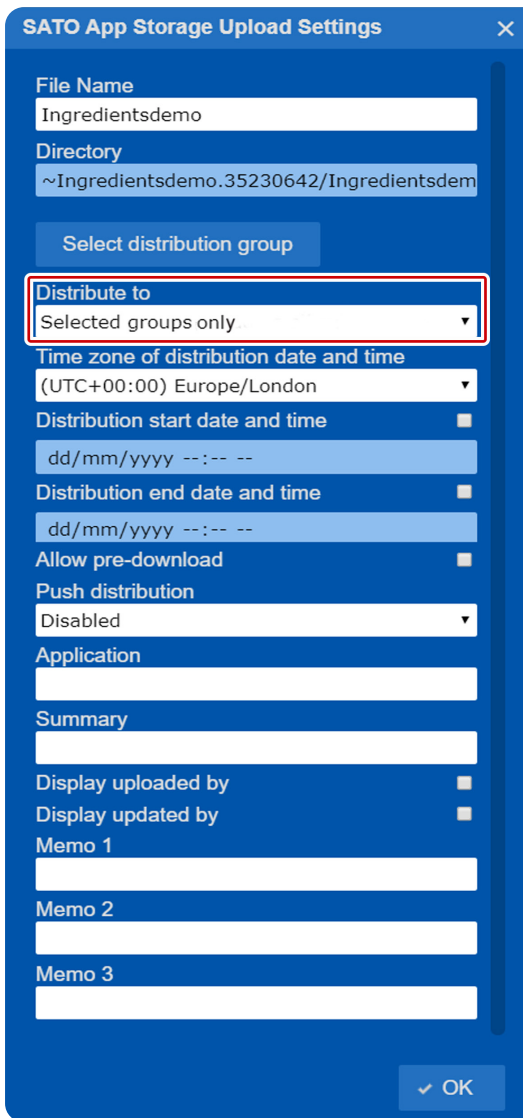
When overwriting and uploading the file on SAS, set default values for **Select distribution group** and **Distribute to**.

Assuming that the account to be used has a subordinate group as shown.



The dialog below shows the case of overwriting and uploading the package that has already been uploaded with **Tokyo** and **Sapporo** groups selected for **Select distribution group**, and with **Selected groups only** selected for **Distribute to**.

4



SATO App Storage Upload Settings

File Name
Ingredientsdemo

Directory
~Ingredientsdemo.35230642/Ingredientsdem

Select distribution group

Distribute to
Selected groups only

Time zone of distribution date and time
(UTC+00:00) Europe/London

Distribution start date and time
dd/mm/yyyy --:-- --

Distribution end date and time
dd/mm/yyyy --:-- --

Allow pre-download

Push distribution
Disabled

Application

Summary

Display uploaded by

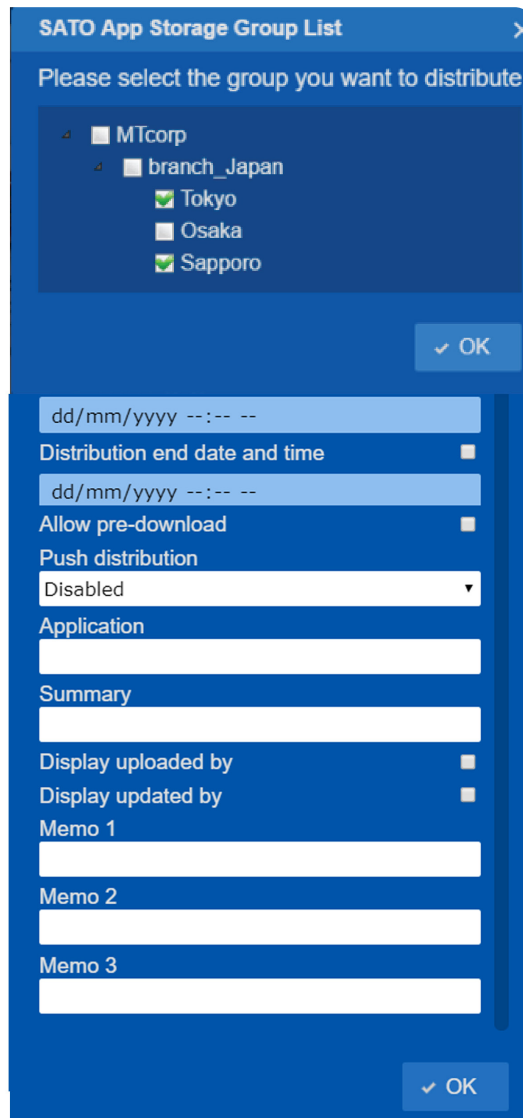
Display updated by

Memo 1

Memo 2

Memo 3

OK



SATO App Storage Group List

Please select the group you want to distribute

- MTcorp
 - branch_Japan
 - Tokyo
 - Osaka
 - Sapporo

OK

dd/mm/yyyy --:-- --

Distribution end date and time
dd/mm/yyyy --:-- --

Allow pre-download

Push distribution
Disabled

Application

Summary

Display uploaded by

Display updated by

Memo 1

Memo 2

Memo 3

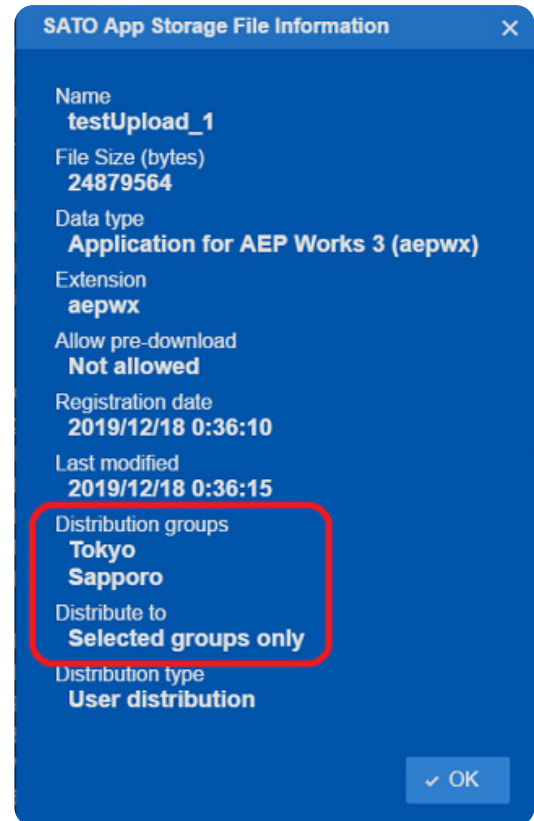
OK

File Information Dialog

This dialog will be shown when right-clicking the file in file download and file delete dialogs.

The information from **Select distribution group** and **Distribute to** is added to the File Information dialog.

The dialog shows the case of the file used in the **Upload Settings Dialog** described above.



4

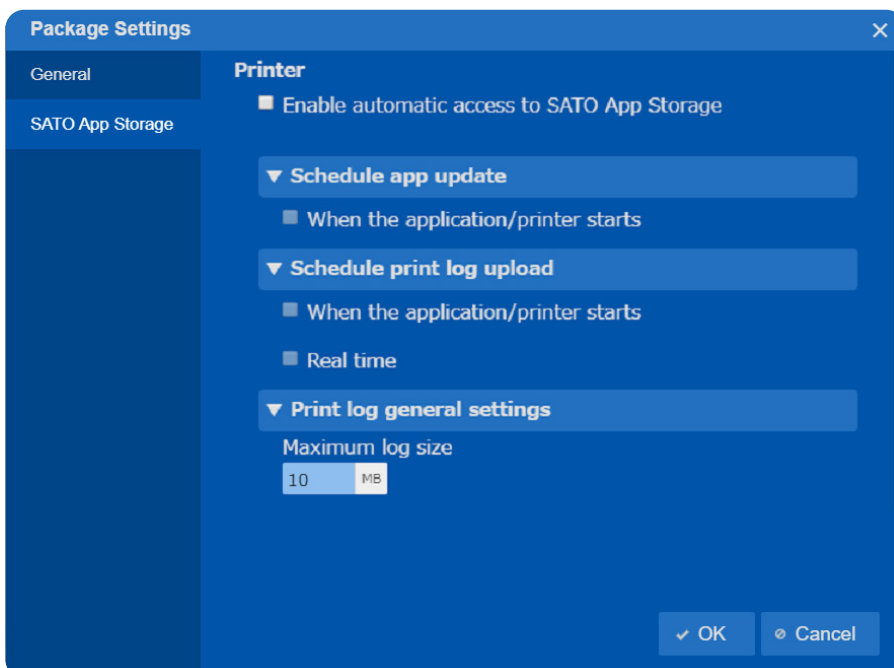
Configure SATO App Storage in Package

The package settings page allows you to apply and edit SATO App Storage settings for individual packages and your printer.

NOTE: These configurations are only applied to a selected individual package, and do not function as general settings for all existing packages in AEP Utility 3 or your printer.

To open SATO App Storage settings, click  on the **Package Overview** toolbar. The following options are available:

Printer



Enable automatic access to SATO App Storage:

Selecting this option allows the printer to schedule automatic application updates and print log upload via SATO App Storage.

NOTE: If SAS setting (**Enable automatic access to SATO App Storage**) of the **Package Settings** is disabled, the menu option will be grayed-out and cannot be selected.

Click the following options to expand for more settings available.

Schedule app update

- **When the Application/Printer Starts:**

Selecting this option automatically searches for updates when the application/printer is started.

- **Every day at:**

Set a desired time zone from the drop-down menu. Set at what time every day your printer will update the application.

NOTE:

- The availability of the **Every day at** option (time schedule function) depends on the conditions explained on the next page.
- If no scheduling option is selected your printer cannot receive automatic updates.

Schedule print log upload

- **When the Application/Printer Starts:**

Selecting this option automatically uploads the print log when the application/printer is started.

- **Real time:**

Selecting this option automatically uploads the print log when it is updated.

NOTE:

Schedule print log upload is not shown if the targeted printer/firmware does not support it.

Print log general settings

- **Maximum log size:** Set the maximum log file size to upload. You can set from 1 MB to 100 MB.

NOTE:

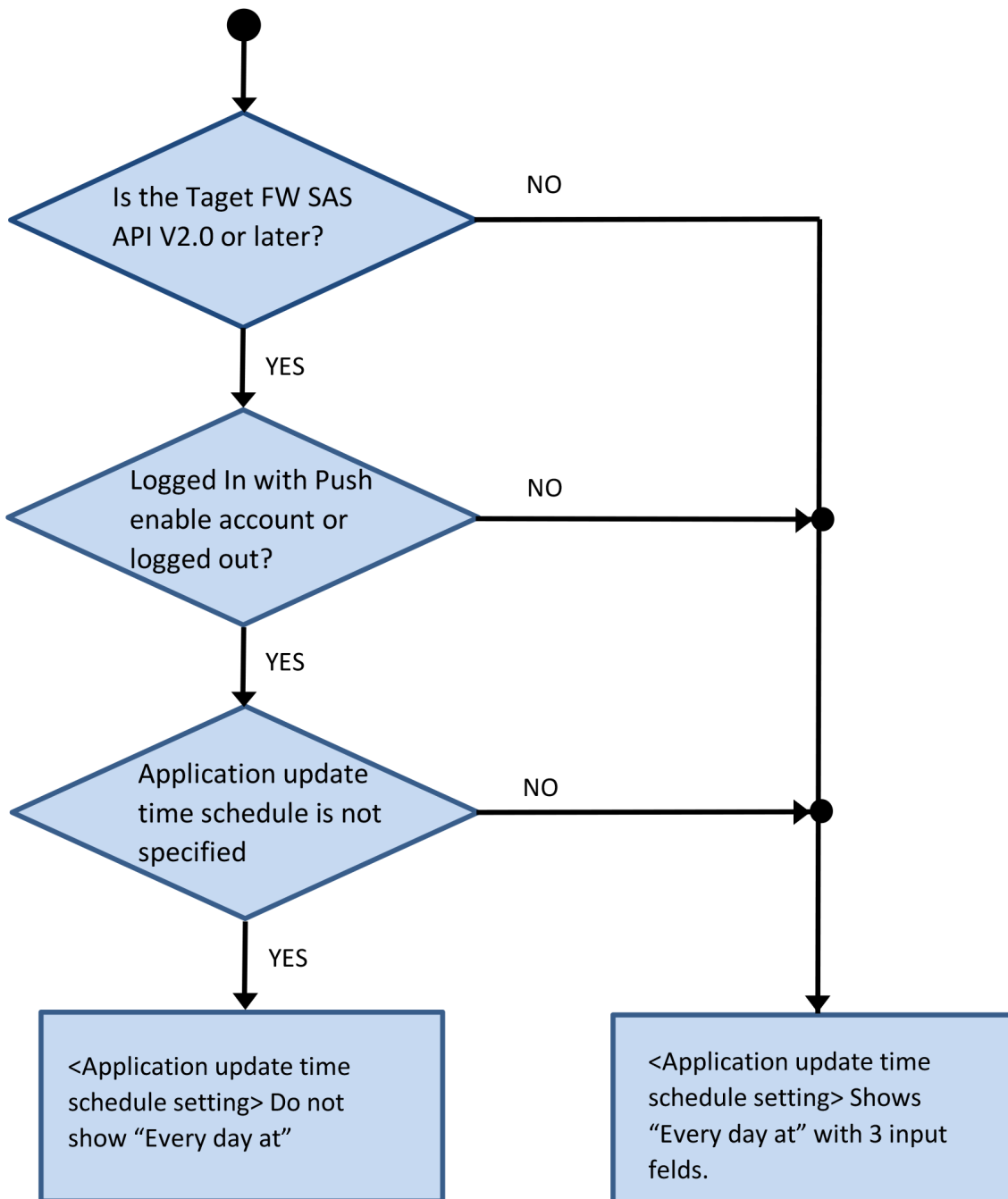
Print log general settings is not shown if the targeted printer/firmware does not support it.



Conditions for the availability of the time schedule function

The time schedule function of the application update schedule which can be specified in the **SATO App Storage** tab of AEP Utility 3 package settings dialog will be deleted. However, if the package already has the time schedule function, the settings shall be shown to enable the settings changes.

The following chart explains the conditions of showing **Every day at** in the **Schedule app update** under **SATO APP Storage** of **Package Settings**.



5

License Agreements



- License Agreements

License Agreements

Please read this Agreement carefully before indicating acceptance at the end of the text of this Agreement. This Agreement states the terms and conditions upon which SATO Corporation and its representative (collectively, "SATO") offers you a right to use this software together with all related explanatory written materials and accompanying items including, but not limited to, the executable programs, drivers, and data files associated with such programs (collectively, "Software"). If you agree to the Terms and Conditions ("Terms") of this Agreement, click on the ACCEPT button below. If you do not agree with the Terms, click on the DECLINE button. If you do not agree with the Terms, you cannot use the software, and access content only available to users that have agreed to the Terms.

1. License Grant

SATO grants you a nonexclusive license to use the Software installed in a single location on a hard disk or other storage devices. You should not rent, lease, sublicense or lend the Software to third parties. You may, however, transfer all your rights to use the Software to another person or legal entity provided that you transfer this Agreement, the Software, including all copies, updates and prior versions, to such person or entity, and that you do not retain the Software downloaded from this website saved on a computer. Further, you agree not to place the Software onto a server so it is accessible via a public network such as the Internet or an intranet. Any transfer of the Software terminates your license and all associated benefits under this Agreement. You shall not copy, modify, decompile, disassemble, extract, or reverse engineer the Software. You also shall not merge any portion of the Software into, or integrate any portion of the Software with any other program. Any portion of the Software merged into or integrated with another program, if any, will continue to be subject to the Terms of this Agreement.

2. Disclaimer of Warranty

THE SOFTWARE IS PROVIDED "AS IS". YOU AGREE THAT SATO DOES NOT MAKE ANY WARRANTY AND HEREBY DISCLAIMS ANY WARRANTY AND REPRESENTATION WHETHER EXPRESS OR IMPLIED, INCLUDING BUT NOT LIMITED TO, ANY IMPLIED WARRANTY OF MERCHANTABILITY, FITNESS FOR A PARTICULAR PURPOSE AND NON-INFRINGEMENT IN RESPECT OF THE SOFTWARE. WITHOUT LIMITING THE ABOVE YOU UNDERSTAND AND AGREE THAT THE SOFTWARE MAY NOT MEET YOUR REQUIREMENTS, OPERATE ERROR FREE, AND MAY RESULT IN DAMAGE, DELAY, PROCESSING DELAYS OR OTHER DIFFICULTIES WITH YOUR COMPUTER SYSTEM.

3. Limitation of Liability

IN NO EVENT SHALL SATO BE LIABLE TO YOU FOR ANY DIRECT CONSEQUENTIAL, SPECIAL, INCIDENTAL, OR INDIRECT DAMAGES OF ANY KIND ARISING OUT OF USE OF OR INABILITY TO USE THE SOFTWARE, INCLUDING BUT NOT LIMITED TO, LOST REVENUE, PROFIT, OR DATA, HOWEVER CAUSED AND REGARDLESS OF THE THEORY OF LIABILITY, WITH RESPECT TO THE SOFTWARE OR TO THE USE OF SUCH SOFTWARE.

Some states or jurisdictions do not allow the exclusion or limitation of consequential, special, incidental or indirect damages, or the exclusion of implied warranties.

4. Indemnification

You shall indemnify and hold harmless SATO for any damages and loss for any breach of this Agreement by you, and for use of the Software by you. You further understand and agree that monetary damages may not be sufficient remedy for any breach of this Agreement by you and that SATO shall be entitled to seek specific performance and injunctive or other equitable relief as a remedy for any such breach or threatened breach. Such remedy shall not be deemed to be the exclusive remedy for your breach of this Agreement, but shall be in addition to all other remedies available at law or equity to SATO.

5. Intellectual Property

The Software is protected by copyright.

This Agreement shall not be construed to transfer or to grant you any express or implied rights in respect of patents, copyrights, trademarks or other proprietary intellectual property covering the Software.

6. General

This Agreement shall be governed by and construed in accordance with the laws of Japan. This Agreement constitutes the entire agreement between you and SATO, and supersedes any prior written or oral agreements between you and SATO concerning the Software. No modifications of this Agreement shall be binding unless executed in writing by you and SATO.

Regardless of the above, terms and conditions of a user license agreement accompanying a particular software shall supersede the Terms in this Agreement in respect of such particular software.

If any part of this Agreement is found void and unenforceable, it will not affect the validity of the balance of the Agreement, which shall remain valid and enforceable according to its terms.

If you have any questions concerning this Agreement, please contact us at marketing@satogbs.com

DISCLAIMER No distributor, dealer or any other entity or person is authorized to expand or alter this warranty or any other provisions of this Agreement. Any representation, other than the warranties set forth in this Agreement, will not bind SATO.

SATO fonts

The fonts SatoSans, SatoSerif, SatoSans Bold, SatoSerif Bold have a generous copyright, allowing derivative works (as long as “Sato” or the above font names are not included in the new fonts and font names), and full redistribution (so long as they are not *sold* by themselves). They can be bundled, redistributed and sold with any software and any number of SATO printers.

The fonts are distributed under the following copyright:

Copyright © 2010 by SATO Corporation All Rights Reserved.

Permission is hereby granted, free of charge, to any person obtaining a copy of the fonts accompanying this license (“Fonts”) and associated documentation files (the “Font Software”), to reproduce and distribute the Font Software, including without limitation the rights to use, copy, merge, publish, distribute, and/or sell copies of the Font Software, and to permit persons to whom the Font Software is furnished to do so, subject to the following conditions:

The above copyright and trademark notices and this permission notice shall be included in all copies of one or more of the Font Software typefaces.

The Font Software may be modified, altered, or added to, and in particular, the designs of glyphs or characters in the Fonts may be modified and additional glyphs or characters may be added to the Fonts, only if the fonts are renamed to names not containing either of the words “Sato” or the above font names.

This License becomes null and void to the extent applicable to Fonts or Font Software that has been modified and is distributed under the “Sato” names.

The Font Software may be sold as part of a larger software package but no copy of one or more of the Font Software typefaces may be sold by itself.

THE FONT SOFTWARE IS PROVIDED “AS IS”, WITHOUT WARRANTY OF ANY KIND, EXPRESS OR IMPLIED, INCLUDING BUT NOT LIMITED TO ANY WARRANTIES OF MERCHANTABILITY, FITNESS FOR A PARTICULAR PURPOSE AND NON-INFRINGEMENT OF COPYRIGHT, PATENT, TRADEMARK, OR OTHER RIGHT. IN NO EVENT SHALL SATO BE LIABLE FOR ANY CLAIM, DAMAGES OR OTHER LIABILITY, INCLUDING ANY GENERAL, SPECIAL, INDIRECT, INCIDENTAL, OR CONSEQUENTIAL DAMAGES, WHETHER IN AN ACTION OF CONTRACT, TORT OR OTHERWISE, ARISING FROM, OUT OF THE USE OR INABILITY TO USE THE FONT SOFTWARE OR FROM OTHER DEALINGS IN THE FONT SOFTWARE.

Except as contained in this notice, the names SATO shall not be used in advertising or otherwise to promote the sale, use or other dealings in this Font Software without prior written authorization from SATO Corporation.

Other internal fonts are the copyright of SATO and may only be used together with this software.

Non-SATO fonts bundled with applications created with this software

This software provides the means of adding fonts from various font vendors including Windows fonts. The use of such fonts in applications created with this software must be in compliance with rules and regulations stated by the font creators or vendors of these fonts. Organizations and persons developing applications take on full responsibility to ensure compliance with their respective font vendor license and royalty agreements.

1. Royalties and license rights IF FONTS FROM OTHER VENDORS THAN SATO ARE USED YOU AGREE TO FULFILL AND HONOR THEIR RESPECTIVE ROYALTY AND LICENSE AGREEMENTS. SATO CANNOT BE LIABLE FOR UNAUTHORIZED USE OF FONTS.
2. Disclaimer of Warranty IF FONTS FROM OTHER VENDORS ARE USED YOU AGREE THAT SATO DOES NOT MAKE ANY WARRANTY AND HEREBY DISCLAIMS ANY WARRANTY AND REPRESENTATION WHETHER EXPRESS OR IMPLIED, INCLUDING BUT NOT LIMITED TO, ANY IMPLIED WARRANTY OF MERCHANTABILITY, FITNESS FOR A PARTICULAR PURPOSE AND NON-INFRINGEMENT IN RESPECT OF THE SOFTWARE. WITHOUT LIMITING THE ABOVE YOU UNDERSTAND AND AGREE THAT THE SOFTWARE MAY NOT MEET YOUR REQUIREMENTS, OPERATE ERROR-FREE, AND MAY RESULT IN DAMAGE, DELAY, PROCESSING DELAYS OR OTHER DIFFICULTIES WITH YOUR COMPUTER SYSTEM.
3. Limitation of Liability IN NO EVENT SHALL SATO BE LIABLE TO YOU OR TO FONT VENDORS FOR ANY DIRECT CONSEQUENTIAL, SPECIAL, INCIDENTAL, OR INDIRECT DAMAGES OF ANY KIND ARISING OUT OF USE OF OR INABILITY TO USE THE SOFTWARE, INCLUDING BUT NOT LIMITED TO, LOST REVENUE, PROFIT, OR DATA, HOWEVER CAUSED AND REGARDLESS OF THE THEORY OF LIABILITY, WITH RESPECT TO THE SOFTWARE OR TO THE USE OF SUCH SOFTWARE.

Lua:

Copyright © 1994-2015 Lua.org, PUC-Rio.

Permission is hereby granted, free of charge, to any person obtaining a copy of this software and associated documentation files (the “Software”), to deal in the Software without restriction, including without limitation the rights to use, copy, modify, merge, publish, distribute, sublicense, and/or sell copies of the Software, and to permit persons to whom the Software is furnished to do so, subject to the following conditions:

The above copyright notice and this permission notice shall be included in all copies or substantial portions of the Software.

THE SOFTWARE IS PROVIDED “AS IS”, WITHOUT WARRANTY OF ANY KIND, EXPRESS OR IMPLIED, INCLUDING BUT NOT LIMITED TO THE WARRANTIES OF MERCHANTABILITY, FITNESS FOR A PARTICULAR PURPOSE AND NON-INFRINGEMENT. IN NO EVENT SHALL THE AUTHORS OR COPYRIGHT HOLDERS BE LIABLE FOR ANY CLAIM, DAMAGES OR OTHER LIABILITY, WHETHER IN AN ACTION OF CONTRACT, TORT OR OTHERWISE, ARISING FROM, OUT OF OR IN CONNECTION WITH THE SOFTWARE OR THE USE OR OTHER DEALINGS IN THE SOFTWARE.

LuaSocket 2.0.2 license:

Copyright © 2004-2007 Diego Nehab

Permission is hereby granted, free of charge, to any person obtaining a copy of this software and associated documentation files (the “Software”), to deal in the Software without restriction, including without limitation the rights to use, copy, modify, merge, publish, distribute, sublicense, and/or sell copies of the Software, and to permit persons to whom the Software is furnished to do so, subject to the following conditions: The above copyright notice and this permission notice shall be included in all copies or substantial portions of the Software.

THE SOFTWARE IS PROVIDED “AS IS”, WITHOUT WARRANTY OF ANY KIND, EXPRESS OR IMPLIED, INCLUDING BUT NOT LIMITED TO THE WARRANTIES OF MERCHANTABILITY, FITNESS FOR A PARTICULAR PURPOSE AND NON-INFRINGEMENT. IN NO EVENT SHALL THE AUTHORS OR COPYRIGHT HOLDERS BE LIABLE FOR ANY CLAIM, DAMAGES OR OTHER LIABILITY, WHETHER IN AN ACTION OF CONTRACT, TORT OR OTHERWISE, ARISING FROM, OUT OF OR IN CONNECTION WITH THE SOFTWARE OR THE USE OR OTHER DEALINGS IN THE SOFTWARE.

Expat:

Copyright © 1998, 1999, 2000 Thai Open Source Software Center Ltd and Clark Cooper

Copyright © 2001, 2002, 2003, 2004, 2005, 2006 Expat maintainers.

Permission is hereby granted, free of charge, to any person obtaining a copy of this software and associated documentation files (the “Software”), to deal in the Software without restriction, including without limitation the rights to use, copy, modify, merge, publish, distribute, sublicense, and/or sell copies of the Software, and to permit persons to whom the Software is furnished to do so, subject to the following conditions:

The above copyright notice and this permission notice shall be included in all copies or substantial portions of the Software.

THE SOFTWARE IS PROVIDED “AS IS”, WITHOUT WARRANTY OF ANY KIND, EXPRESS OR IMPLIED, INCLUDING BUT NOT LIMITED TO THE WARRANTIES OF MERCHANTABILITY, FITNESS FOR A PARTICULAR PURPOSE AND NON-INFRINGEMENT. IN NO EVENT SHALL THE AUTHORS OR COPYRIGHT HOLDERS BE LIABLE FOR ANY CLAIM, DAMAGES OR OTHER LIABILITY, WHETHER IN AN ACTION OF CONTRACT, TORT OR OTHERWISE, ARISING FROM, OUT OF OR IN CONNECTION WITH THE SOFTWARE OR THE USE OR OTHER DEALINGS IN THE SOFTWARE.

Bitlib:

Copyright © 2000-2008 Reuben Thomas

Permission is hereby granted, free of charge, to any person obtaining a copy of this software and associated documentation files (the “Software”), to deal in the Software without restriction, including without limitation the rights to use, copy, modify, merge, publish, distribute, sublicense, and/or sell copies of the Software, and to permit persons to whom the Software is furnished to do so, subject to the following conditions:

The above copyright notice and this permission notice shall be included in all copies or substantial portions of the Software.

THE SOFTWARE IS PROVIDED “AS IS”, WITHOUT WARRANTY OF ANY KIND, EXPRESS OR IMPLIED, INCLUDING BUT NOT LIMITED TO THE WARRANTIES OF MERCHANTABILITY, FITNESS FOR A PARTICULAR PURPOSE AND NON-INFRINGEMENT. IN NO EVENT SHALL THE AUTHORS OR COPYRIGHT HOLDERS BE LIABLE FOR ANY CLAIM, DAMAGES OR OTHER LIABILITY, WHETHER IN AN ACTION OF CONTRACT, TORT OR OTHERWISE, ARISING FROM, OUT OF OR IN CONNECTION WITH THE SOFTWARE OR THE USE OR OTHER DEALINGS IN THE SOFTWARE.

Freetype:

Portions of this software are copyright © 2000-2007 The FreeType Project (www.freetype.org <<http://www.freetype.org>>). All rights reserved.

Zlib:

Version 1.2.4, August 3rd, 2018

Copyright © 1995-2010 Jean-loup Gailly and Mark Adler.

BSD:

Portions of this software contain software codes that are covered by the following copyright:

Copyright © 1989 The Regents of the University of California. All rights reserved.

Redistribution and use in source and binary forms, with or without modification, are permitted provided that the following conditions are met:

1. Redistributions of source code must retain the above copyright notice, this list of conditions and the following disclaimer.
2. Redistributions in binary form must reproduce the above copyright notice, this list of conditions and the following disclaimer in the documentation and/or other materials provided with the distribution.
3. Neither the name of the University nor the names of its contributors may be used to endorse or promote products derived from this software without specific prior written permission.

THIS SOFTWARE IS PROVIDED BY THE REGENTS AND CONTRIBUTORS "AS IS" AND ANY EXPRESS OR IMPLIED WARRANTIES, INCLUDING, BUT NOT LIMITED TO, THE IMPLIED WARRANTIES OF MERCHANTABILITY AND FITNESS FOR A PARTICULAR PURPOSE ARE DISCLAIMED. IN NO EVENT SHALL THE REGENTS OR CONTRIBUTORS BE LIABLE FOR ANY DIRECT, INDIRECT, INCIDENTAL, SPECIAL, EXEMPLARY, OR CONSEQUENTIAL DAMAGES (INCLUDING, BUT NOT LIMITED TO, PROCUREMENT OF SUBSTITUTE GOODS OR SERVICES; LOSS OF USE, DATA, OR PROFITS; OR BUSINESS INTERRUPTION) HOWEVER CAUSED AND ON ANY THEORY OF LIABILITY, WHETHER IN CONTRACT, STRICT LIABILITY, OR TORT (INCLUDING NEGLIGENCE OR OTHERWISE) ARISING IN ANY WAY OUT OF THE USE OF THIS SOFTWARE, EVEN IF ADVISED OF THE POSSIBILITY OF SUCH DAMAGE.

ScintillaNET:

ScintillaNET is based on the Scintilla component by Neil Hodgson.
 ScintillaNET is released on this same license.
 The ScintillaNET bindings are Copyright 2002-2006 by Garrett Serack <gserack@gmail.com>

All Rights Reserved

Permission to use, copy, modify, and distribute this software and its documentation for any purpose and without fee is hereby granted, provided that the above copyright notice appears in all copies and that both copyright notice and this permission notice appear in supporting documentation.

GARRETT SERACK AND ALL EMPLOYERS PAST AND PRESENT DISCLAIM ALL WARRANTIES WITH REGARD TO THIS SOFTWARE, INCLUDING ALL IMPLIED WARRANTIES OF MERCHANTABILITY AND FITNESS, IN NO EVENT SHALL GARRETT SERACK AND ALL EMPLOYERS PAST AND PRESENT BE LIABLE FOR ANY SPECIAL, INDIRECT OR CONSEQUENTIAL DAMAGES OR ANY DAMAGES WHATSOEVER RESULTING FROM LOSS OF USE, DATA OR PROFITS, WHETHER IN AN ACTION OF CONTRACT, NEGLIGENCE OR OTHER TORTIOUS ACTION, ARISING OUT OF OR IN CONNECTION WITH THE USE OR PERFORMANCE OF THIS SOFTWARE.

The license for Scintilla is as follows:

 Copyright 1998-2006 by Neil Hodgson <neilh@scintilla.org>

All Rights Reserved

Permission to use, copy, modify, and distribute this software and its documentation for any purpose and without fee is hereby granted, provided that the above copyright notice appears in all copies and that both copyright notice and this permission notice appear in supporting documentation.

NEIL HODGSON DISCLAIMS ALL WARRANTIES WITH REGARD TO THIS SOFTWARE, INCLUDING ALL IMPLIED WARRANTIES OF MERCHANTABILITY AND FITNESS, IN NO EVENT SHALL NEIL HODGSON BE LIABLE FOR ANY SPECIAL, INDIRECT OR CONSEQUENTIAL DAMAGES OR ANY DAMAGES WHATSOEVER RESULTING FROM LOSS OF USE, DATA OR PROFITS, WHETHER IN AN ACTION OF CONTRACT, NEGLIGENCE OR OTHER TORTIOUS ACTION, ARISING OUT OF OR IN CONNECTION WITH THE USE OR PERFORMANCE OF THIS SOFTWARE.



Icons:

Copyright 2018 SATO

Licensed under the Apache License, Version 2.0 (the "License"); you may not use this file except in compliance with the License. You may obtain a copy of the License at:

<http://www.apache.org/licenses/LICENSE-2.0>

Unless required by applicable law or agreed to in writing, software distributed under the License is distributed on an "AS IS" BASIS, WITHOUT WARRANTIES OR CONDITIONS OF ANY KIND, either express or implied. See the License for the specific language governing permissions and limitations under the License.

=====
End of Agreement
=====

SAVO